

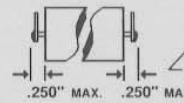
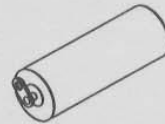
# ACCESSORIES AND HARDWARE FOR HERMETICALLY SEALED METAL TUBES

## CIRCUIT STYLES

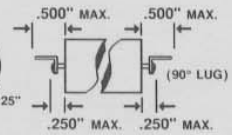
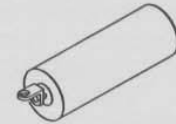
HERMETICALLY SEALED STYLES

RECTANGULAR CASE STYLE	ROUND CASE STYLE	CIRCUIT SCHEMATIC	STYLE NOTES
G	L		CASE FLOATING
F	K		CASE GROUNDED (DEDUCT .062" FROM CASE LENGTH)
H	P		CASE TERMINAL (DEDUCT .062" FROM CASE LENGTH)
-	R		FEED THROUGH (THREADED NECK ONLY)

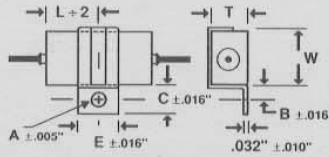
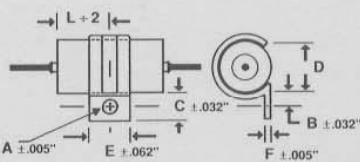
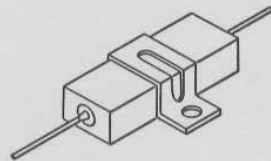
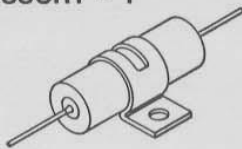
## LUG TERMINAL ACCESSORY - 3



## 90° LUG TERMINAL ACCESSORY - 4



## TANGENTIAL BRACKET ACCESSORY - 1

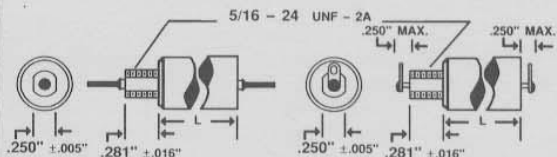
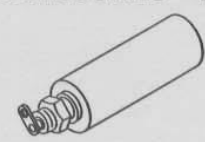
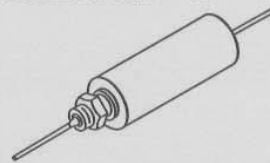


TUBE SIZE		BRACKET DIMENSIONS			
T	W	A	B	C	E
.22"	.34"	.144"	.187"	.312"	.250"
.31"	.41"	.144"	.187"	.312"	.250"
.40"	.57"	.156"	.250"	.437"	.500"
.50"	.65"	.156"	.250"	.437"	.500"
.60"	.80"	.156"	.250"	.437"	.500"

TUBE DIA.	BRACKET DIMENSIONS				
	A	B	C	E	F
.400" & .500"	.144"	.187"	.312"	.250"	.032"
≥ .562"	.156"	.250"	.437"	.500"	.048"

.400" & .500" Tubes have a 135° bracket wrap around. Other styles and sizes available on special order.

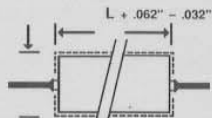
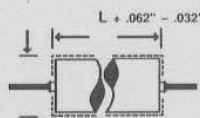
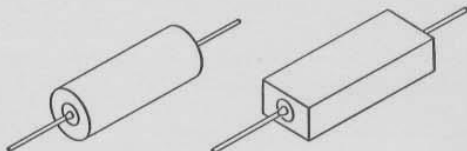
## THREADED NECK MOUNTING ACCESSORIES - 2



Lead wire size No. 20 AWG. Lug terminal has a .062" x .125" hole.

NOTES:  
Threaded neck styles available in .400" case diameters and up only. Other threaded neck sizes and body lengths are available on special order. The Standard threaded neck has two flats. An internal tooth lock washer of plated phosphor bronze and a 5/16 - 24 UNF - B2 plated brass nut is supplied with each unit.

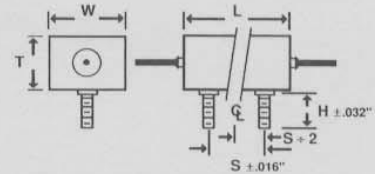
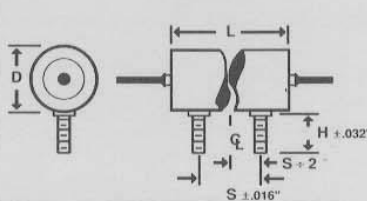
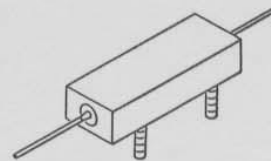
## INSULATING SLEEVE ACCESSORY - 5



D ADD .015" TO DIAMETER FOR SLEEVING

T AND W ADD .015" TO EACH DIMENSION FOR SLEEVING

## STUD MOUNTING ACCESSORY - 6



TUBE LENGTH	STUD CENTERS	STUD SIZE
L	S	H
.875" - 1.125"	.625"	6-32 x .437"
1.250" - 1.500"	.750"	6-32 x .437"
1.625" - 2.062"	1.125"	6-32 x .437"
2.125" - 2.625"	1.375"	6-32 x .437"

TUBE LENGTH	STUD CENTERS	STUD SIZE
L	S	H
.688" - .938"	.500"	4-40 x .437"
1.000" - 1.125"	.625"	6-32 x .437"
1.188" - 1.500"	.750"	6-32 x .437"
1.562" - 2.000"	1.125"	6-32 x .437"
2.062" - & UP	1.375"	6-32 x .437"