

ELECTRON PRODUCTS INC.

ENGINEERING DATA SHEET

METALLIZED POLYCARBONATE CAPACITORS

SERIES

H

ENVIRONMENTAL DATA

APPLICATIONS

Series H Metallized Polycarbonate capacitors have superior electrical properties. They are dry-section, non-polar, non-inductive wound capacitors with low Dissipation Factor, low Dielectric Absorption, high Insulation Resistance and a low Temperature Coefficient.

Series H Capacitors come in several styles: Oval Wrap & Fill; Round Wrap & Fill (C Style); Axial Epoxy Case (E Style); Radial Epoxy Case (2E Style); Rectangular Hermetically Sealed (G Style); Round Hermetically Sealed (L Style). They are available in several sizes including Regular as well as custom sizes to meet specific customer requirements.

Contact our Engineering Department for special sizes, configurations, capacitance values and AC applications with Anti-Corona construction at all frequencies. Custom metal enclosures are available. Custom designed Feed Through capacitors (HQ Style) are also available for filter applications to specific requirements.

OPERATING TEMPERATURE RANGE

Range: -55°C to +125°C, without voltage derating.

LIFE TEST

Series H capacitors shall be capable of withstanding a test of 1000 hours at 125°C and 100% of the DC rated voltage or a test of 250 hours at 125°C and 140% of the DC voltage. The voltage shall be applied to each capacitor through its individual current-limiting resistor as determined from the formula $R = 0.025/C$, where C is the nominal capacitance in farads and R is in ohms. The test procedures shall be in accordance with MIL-C-18312, except as noted herein. Not more than one failure in twelve shall be permitted. Any one of the following shall be considered a failure.

- A change in capacitance of more than 10% from it's initial value.
- An increase in Dissipation Factor to a value greater than 150% of the acceptance limit.
- A decrease in Insulation Resistance to a value less than 30% of the acceptance limit for 25°C.
- A permanent short or open.

VIBRATION

Series H capacitors shall be capable of withstanding a vibration test in accordance with MIL-STD-202, Method 201. The following details and exceptions shall apply:

a. **Mounting.** The capacitor body shall be rigidly mounted by the entire body length to the vibration test fixture. The leads shall be soldered to rigidly supported terminals and so spaced that the length of each lead from the capacitor is $1/2 \pm 1/8$ inch from the edge of the supporting terminal.

b. **Measurement during Vibration.** During the last cycle in each direction, an electrical measurement shall be made to detect intermittent contacts (not to be confused with "self healing" clearings) or open or short circuiting.

c. **Examination After Vibration.** Capacitors shall be visibly examined for evidence of mechanical damage.

MOISTURE RESISTANCE

Series H capacitor Styles HG and HL (hermetically sealed in metal containers) shall be capable of withstanding the moisture resistance, humidity, and temperature and immersion cycling or MIL-C-18312. Styles HE and H2E (epoxy encased) and Style wrap & fill capacitors are not intended for exposure to high humidity conditions over extended periods of time.

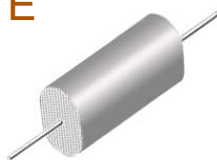
TERMINAL STRENGTH

Series H capacitors utilize tin-plated, copper-clad steel wire terminals which shall be capable of withstanding the following test without mechanical damage to the capacitor or terminals:

a. **Pull Test.** The capacitor shall withstand a steady pull of 5 pounds axially to the leads for 1 minute.

b. **Bend Test.** The wire lead terminals shall be bent at a point of 1/4 inch from the body of the capacitor, first 90 degrees in one direction, then back to the original position, and then 90 degrees in the opposite direction.

METALLIZED POLYCARBONATE WRAP AND FILL, OVAL AXIAL LEAD CAPACITORS



H
METALLIZED POLYCARBONATE
WRAP & FILL, OVAL
REGULAR SERIES

ORDERING DESCRIPTION

Capacitor, fixed: Metallized Polycarbonate dielectric; extended foil construction; tin-plated copper-clad steel wire axial leads; encased in skin-tight plastic wrap with epoxy end fill.

APPLICATION NOTES

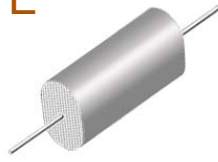
Wrap & Fill capacitors are not intended for exposure to high humidity conditions over extended periods of time. For stringent environmental conditions, Wrap & Fill capacitors should be used in encapsulated or hermetically sealed circuitry.

SELECTION AND ORDERING TABLES Select voltage rating, capacitance and tolerance, read Part Number to the right.

MFD	35VDC 20VAC				50VDC 40VAC				100VDC 70VAC				200VDC 120VAC											
	T		W		L		PART #		T		W		L		PART #		T		W		L		PART #	
	+ .05"		+ .05"		± .05"				+ .05"		+ .05"		± .05"				+ .05"		+ .05"		± .05"			
.001	.09	.18	.40	H.35-102E	.09	.18	.40	H.5-102E	.09	.18	.40	H1-102E	.09	.18	.40	H2-102E								
.0027	.09	.18	.40	H.35-272E	.09	.18	.40	H.5-272E	.09	.18	.40	H1-272E	.09	.18	.40	H2-272E								
.0033	.09	.18	.40	H.35-332E	.09	.18	.40	H.5-332E	.09	.18	.40	H1-332E	.09	.18	.40	H2-332E								
.0056	.09	.18	.40	H.35-562E	.09	.18	.40	H.5-562E	.09	.18	.40	H1-562E	.09	.18	.40	H2-562E								
.0068	.09	.18	.40	H.35-682E	.09	.18	.40	H.5-682E	.09	.18	.40	H1-682E	.09	.18	.40	H2-682E								
.0082	.09	.18	.40	H.35-822E	.09	.18	.40	H.5-822E	.09	.18	.40	H1-822E	.09	.18	.40	H2-822E								
.01	.09	.18	.40	H.35-103E	.09	.18	.40	H.5-103E	.09	.18	.40	H1-103E	.10	.23	.40	H2-103E								
.012	.09	.18	.40	H.35-123E	.09	.18	.40	H.5-123E	.09	.18	.40	H1-123E	.10	.23	.40	H2-123E								
.015	.09	.18	.40	H.35-153E	.09	.18	.40	H.5-153E	.09	.18	.40	H1-153E	.11	.24	.40	H2-153E								
.018	.09	.18	.40	H.35-183E	.09	.18	.40	H.5-183E	.09	.18	.40	H1-183E	.12	.25	.40	H2-183E								
.022	.09	.18	.40	H.35-223E	.09	.18	.40	H.5-223E	.09	.18	.40	H1-223E	.14	.27	.40	H2-223E								
.027	.09	.18	.40	H.35-273E	.09	.18	.40	H.5-273E	.09	.22	.40	H1-273E	.10	.24	.53	H2-273E								
.033	.09	.18	.40	H.35-333E	.09	.18	.40	H.5-333E	.10	.23	.40	H1-333E	.12	.25	.53	H2-333E								
.039	.09	.18	.40	H.35-393E	.09	.18	.40	H.5-393E	.11	.24	.40	H1-393E	.13	.26	.53	H2-393E								
.047	.09	.18	.40	H.35-473E	.09	.18	.40	H.5-473E	.09	.22	.53	H1-473E	.14	.27	.53	H2-473E								
.056	.09	.18	.40	H.35-563E	.09	.19	.40	H.5-563E	.09	.22	.53	H1-563E	.16	.29	.53	H2-563E								
.068	.09	.18	.40	H.35-683E	.10	.20	.40	H.5-683E	.10	.23	.53	H1-683E	.18	.31	.53	H2-683E								
.082	.09	.18	.40	H.35-823E	.11	.21	.40	H.5-823E	.11	.24	.53	H1-823E	.20	.33	.53	H2-823E								
.10	.09	.18	.40	H.35-104E	.13	.22	.40	H.5-104E	.12	.25	.53	H1-104E	.22	.35	.53	H2-104E								
.12	.09	.18	.40	H.35-124E	.14	.24	.40	H.5-124E	.14	.27	.53	H1-124E	.25	.35	.53	H2-124E								
.15	.09	.18	.40	H.35-154E	.11	.21	.53	H.5-154E	.16	.29	.53	H1-154E	.22	.36	.65	H2-154E								
.18	.10	.20	.40	H.35-184E	.12	.22	.53	H.5-184E	.17	.30	.53	H1-184E	.24	.37	.65	H2-184E								
.22	.11	.22	.40	H.35-224E	.13	.23	.53	H.5-224E	.19	.32	.53	H1-224E	.27	.40	.65	H2-224E								
.25	.12	.22	.40	H.35-254E	.14	.24	.53	H.5-254E	.16	.29	.65	H1-254E	.24	.37	.78	H2-254E								
.27	.13	.22	.40	H.35-274E	.15	.25	.53	H.5-274E	.17	.30	.65	H1-274E	.25	.38	.78	H2-274E								
.33	.15	.24	.40	H.35-334E	.17	.26	.53	H.5-334E	.19	.32	.65	H1-334E	.27	.43	.78	H2-334E								
.39	.16	.25	.40	H.35-394E	.18	.28	.53	H.5-394E	.21	.34	.65	H1-394E	.29	.45	.78	H2-394E								
.47	.18	.28	.40	H.35-474E	.20	.30	.53	H.5-474E	.20	.33	.78	H1-474E	.33	.49	.78	H2-474E								
.50	.11	.21	.53	H.35-504E	.21	.31	.53	H.5-504E	.20	.33	.78	H1-504E	.34	.50	.78	H2-504E								
.56	.12	.22	.53	H.35-564E	.22	.32	.53	H.5-564E	.21	.34	.78	H1-564E	.30	.46	.97	H2-564E								
.68	.13	.23	.53	H.35-684E	.25	.35	.53	H.5-684E	.24	.37	.78	H1-684E	.34	.50	.97	H2-684E								
.75	.14	.24	.53	H.35-754E	.26	.36	.53	H.5-754E	.25	.38	.78	H1-754E	.36	.52	.97	H2-754E								
.82	.15	.24	.53	H.35-824E	.22	.31	.65	H.5-824E	.25	.41	.78	H1-824E	.32	.48	1.17	H2-824E								
1.0	.17	.26	.53	H.35-105E	.24	.34	.65	H.5-105E	.23	.39	.97	H1-105E	.36	.52	1.17	H2-105E								
1.2	.19	.28	.53	H.35-125E	.21	.33	.78	H.5-125E	.24	.39	1.17	H1-125E	.30	.48	1.68	H2-125E								
1.5	.22	.31	.53	H.35-155E	.24	.36	.78	H.5-155E	.25	.41	1.17	H1-155E	.33	.51	1.68	H2-155E								
1.8	.25	.34	.53	H.35-185E	.30	.36	.78	H.5-185E	.28	.44	1.17	H1-185E	.38	.54	1.68	H2-185E								
2.0	.26	.35	.53	H.35-205E	.31	.39	.78	H.5-205E	.30	.46	1.17	H1-205E	.41	.57	1.68	H2-205E								
3.0	.25	.35	.65	H.35-305E	.31	.43	.97	H.5-305E	.38	.54	1.17	H1-305E	.51	.65	1.68	H2-305E								
4.0	.25	.35	.78	H.35-405E	.31	.43	1.17	H.5-405E	.37	.51	1.68	H1-405E	.57	.80	1.68	H2-405E								
5.0	.28	.38	.78	H.35-505E	.34	.46	1.17	H.5-505E	.39	.55	1.68	H1-505E	.65	.87	1.68	H2-505E								
6.0	.31	.42	.78	H.35-605E	.39	.52	1.17	H.5-605E	.44	.59	1.68	H1-605E	.73	.97	1.68	H2-605E								
8.0	.32	.42	.97	H.35-805E	.44	.56	1.17	H.5-805E	.50	.66	1.68	H1-805E	.82	1.09	1.68	H2-805E								
10.0	.37	.46	.97	H.35-106E	.50	.62	1.17	H.5-106E	.54	.76	1.68	H1-106E	.90	1.22	1.68	H2-106E								
12.0	.30	.48	1.17	H.35-126E	.55	.69	1.17	H.5-126E	.60	.81	1.68	H1-126E	.84	1.08	2.25	H2-126E								
15.0	.35	.51	1.17	H.35-156E	.48	.60	1.68	H.5-156E	.68	.90	1.68	H1-156E	.95	1.19	2.25	H2-156E								
20.0	.41	.57	1.17	H.35-206E	.54	.69	1.68	H.5-206E	.78	1.00	1.68	H1-206E	1.12	1.36	2.25	H2-206E								
30.0	.52	.69	1.17	H.35-306E	.64	.79	1.68	H.5-306E	.97	1.20	1.68	H1-306E	1.36	1.61	2.25	H2-306E								
40.0	.61	.78	1.17	H.35-406E	.73	.87	1.68	H.5-406E	.95	1.19	2.25	H1-406E	1.28	1.52	3.25	H2-406E								
50.0	.69	.86	1.17	H.35-506E	.82	.98	1.68	H.5-506E	1.06	1.30	2.25	H1-506E	1.43	1.67	3.25	H2-506E								
75.0	.72	.91	1.45	H.35-756E	.99	1.19	1.68	H.5-756E	1.31	1.55	2.25	H1-756E	1.75	1.99	3.25	H2-756E								
100.0	.84	1.03	1.45	H.35-107E	1.11	1.30	1.68	H.5-107E	1.52	1.76	2.25	H1-107E	2.03	2.27	3.25	H2-107E								

Note: Replace the last digit **E** with the desired tolerance code from the tolerance table. For an in-between value use the next larger value's dimensions. Custom sizes are readily available. All dimensions are in inches. All +.05" dimension tolerances are Maximum.

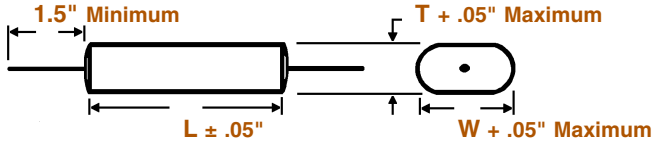
METALLIZED POLYCARBONATE WRAP AND FILL, OVAL AXIAL LEAD CAPACITORS



H
METALLIZED POLYCARBONATE
WRAP & FILL, OVAL
REGULAR SERIES

DIMENSIONS See tables for specific T, W, L values.

WIRE SIZE (Length 1.5" Minimum)



BODY LENGTH (L)	WIRE SIZE	
	AWG No.	Diameter
≤ 0.65"	24	0.020"
> 0.65" ≤ 1.00"	22	0.025"
> 1.00"	20	0.032"

SELECTION AND ORDERING TABLES Select voltage rating, capacitance and tolerance, read Part Number to the right.

MFD	400VDC 230VAC				600VDC 275VAC				1000VDC 480VAC				1500VDC 750VAC																																																						
	T		W		L		PART #		T		W		L		PART #		T		W		L		PART #																																												
	+ .05"	± .05"	+ .05"	± .05"	+ .05"	± .05"	+ .05"	± .05"	+ .05"	± .05"	+ .05"	± .05"	+ .05"	± .05"	+ .05"	± .05"	+ .05"	± .05"	+ .05"	± .05"	+ .05"	± .05"	+ .05"	± .05"																																											
.001	.09	.18	.40	H4-102E	.09	.18	.40	H6-102E	.14	.23	.97	H10-102E	.14	.23	.97	H15-102E	.0012	.09	.18	.40	H4-122E	.09	.18	.40	H6-122E	.14	.23	.97	H10-122E	.14	.23	.97	H15-122E	.0015	.09	.18	.40	H4-152E	.09	.18	.40	H6-152E	.14	.23	.97	H10-152E	.14	.23	.97	H15-152E	.0018	.09	.18	.40	H4-182E	.09	.18	.40	H6-182E	.14	.23	.97	H10-182E	.14	.23	.97	H15-182E
.0022	.09	.18	.40	H4-222E	.09	.18	.40	H6-222E	.15	.24	.97	H10-222E	.15	.24	.97	H15-222E	.0027	.09	.18	.40	H4-272E	.09	.18	.40	H6-272E	.15	.24	.97	H10-272E	.19	.27	.97	H15-272E	.0033	.10	.19	.40	H4-332E	.10	.19	.40	H6-332E	.15	.24	.97	H10-332E	.21	.30	.97	H15-332E	.0039	.10	.19	.40	H4-392E	.10	.19	.53	H6-392E	.15	.24	.97	H10-392E	.23	.32	.97	H15-392E
.0047	.10	.19	.40	H4-472E	.10	.19	.53	H6-472E	.16	.25	.97	H10-472E	.25	.34	.97	H15-472E	.0056	.10	.19	.53	H4-562E	.10	.19	.53	H6-562E	.16	.25	.97	H10-562E	.27	.36	.97	H15-562E	.0068	.11	.20	.53	H4-682E	.11	.20	.53	H6-682E	.17	.26	.97	H10-682E	.31	.40	.97	H15-682E	.0082	.13	.26	.53	H4-822E	.13	.26	.53	H6-822E	.20	.30	.97	H10-822E	.34	.43	.97	H15-822E
.01	.13	.26	.53	H4-103E	.18	.31	.53	H6-103E	.22	.32	.97	H10-103E	.38	.47	.97	H15-103E	.012	.15	.28	.53	H4-123E	.20	.33	.53	H6-123E	.24	.34	.97	H10-123E	.42	.51	.97	H15-123E	.015	.16	.29	.53	H4-153E	.22	.35	.53	H6-153E	.27	.37	.97	H10-153E	.47	.56	.97	H15-153E	.018	.18	.31	.53	H4-183E	.24	.35	.53	H6-183E	.31	.41	.97	H10-183E	.53	.62	.97	H15-183E
.022	.21	.34	.53	H4-223E	.22	.35	.65	H6-223E	.35	.45	.97	H10-223E	.31	.55	1.31	H15-223E	.027	.23	.35	.53	H4-273E	.25	.35	.65	H6-273E	.37	.48	.97	H10-273E	.35	.59	1.31	H15-273E	.033	.20	.33	.65	H4-333E	.23	.36	.78	H6-333E	.44	.53	.97	H10-333E	.40	.65	1.31	H15-333E	.039	.22	.35	.65	H4-393E	.25	.38	.78	H6-393E	.48	.59	.97	H10-393E	.44	.68	1.31	H15-393E
.047	.25	.35	.65	H4-473E	.26	.42	.78	H6-473E	.55	.64	.97	H10-473E	.38	.65	1.68	H15-473E	.056	.23	.36	.78	H4-563E	.29	.45	.78	H6-563E	.32	.56	1.31	H10-563E	.43	.70	1.68	H15-563E	.068	.25	.38	.78	H4-683E	.33	.48	.78	H6-683E	.35	.59	1.31	H10-683E	.48	.75	1.68	H15-683E	.082	.27	.43	.78	H4-823E	.36	.52	.78	H6-823E	.39	.64	1.31	H10-823E	.55	.82	1.68	H15-823E
.10	.30	.46	.78	H4-104E	.36	.52	.97	H6-104E	.45	.70	1.31	H10-104E	.61	.87	1.68	H15-104E	.12	.33	.49	.78	H4-124E	.32	.48	1.17	H6-124E	.51	.75	1.31	H10-124E	.72	.95	1.68	H15-124E	.15	.31	.47	.97	H4-154E	.36	.52	1.17	H6-154E	.59	.82	1.31	H10-154E	.78	1.04	1.68	H15-154E	.18	.35	.51	.97	H4-184E	.40	.56	1.17	H6-184E	.65	.89	1.31	H10-184E	.87	1.13	1.68	H15-184E
.22	.34	.50	1.17	H4-224E	.45	.61	1.17	H6-224E	.56	.80	1.68	H10-224E	.97	1.23	1.68	H15-224E	.25	.36	.52	1.17	H4-254E	.35	.56	1.68	H6-254E	.60	.84	1.68	H10-254E	1.05	1.30	1.68	H15-254E	.27	.38	.54	1.17	H4-274E	.36	.58	1.68	H6-274E	.62	.87	1.68	H10-274E	1.10	1.35	1.68	H15-274E	.33	.42	.58	1.17	H4-334E	.41	.62	1.68	H6-334E	.70	.94	1.68	H10-334E	.93	1.17	2.50	H15-334E
.39	.45	.62	1.17	H4-394E	.45	.67	1.68	H6-394E	.78	1.03	1.68	H10-394E	1.02	1.26	2.50	H15-394E	.47	.51	.67	1.17	H4-474E	.51	.72	1.68	H6-474E	.87	1.12	1.68	H10-474E	1.13	1.37	2.50	H15-474E	.50	.41	.57	1.68	H4-504E	.53	.74	1.68	H6-504E	.89	1.15	1.68	H10-504E	.56	.44	.60	1.68	H4-564E	.56	.77	1.68	H6-564E	.96	1.21	1.68	H10-564E								
.68	.49	.65	1.68	H4-684E	.56	.78	2.00	H6-684E	1.08	1.32	1.68	H10-684E	.75	.51	.67	1.68	H4-754E	.60	.81	2.00	H6-754E	1.14	1.38	1.68	H10-754E	.82	.54	.70	1.68	H4-824E	.58	.79	2.25	H6-824E	1.19	1.43	1.68	H10-824E	1.0	.60	.76	1.68	H4-105E	.65	.86	2.25	H6-105E	.99	1.23	2.50	H10-105E																
1.2	.65	.82	1.68	H4-125E	.72	.93	2.25	H6-125E	1.11	1.35	2.50	H10-125E	1.5	.72	.94	1.68	H4-155E	.81	1.08	2.25	H6-155E	1.24	1.48	2.50	H10-155E	1.8	.79	1.02	1.68	H4-185E	.89	1.14	2.25	H6-185E	1.35	1.59	2.50	H10-185E	2.0	.84	1.07	1.68	H4-205E	.95	1.19	2.25	H6-205E	1.43	1.67	2.50	H10-205E																
3.0	1.06	1.27	1.68	H4-305E	1.19	1.42	2.25	H6-305E	1.46	1.71	3.25	H10-305E	4.0	1.04	1.26	2.25	H4-405E	1.39	1.63	2.25	H6-405E	1.70	1.94	3.25	H10-405E	5.0	1.17	1.39	2.25	H4-505E	1.54	1.78	2.25	H6-505E	1.90	2.14	3.25	H10-505E	6.0	1.28	1.52	2.25	H4-605E	1.68	1.92	2.25	H6-605E	2.08	2.33	3.25	H10-605E																
8.0	1.47	1.71	2.25	H4-805E	1.57	1.81	3.25	H6-805E	2.40	2.65	3.25	H10-805E	10.0	1.63	1.87	2.25	H4-106E	1.75	1.99	3.25	H6-106E	2.68	2.93	3.25	H10-106E	12.0	1.78	2.03	2.25	H4-126E	1.91	2.15	3.25	H6-126E	2.95	3.19	3.25	H10-126E	15.0	1.99	2.24	2.25	H4-156E	2.13	2.37	3.25	H6-156E	3.30	3.54	3.25	H10-156E																

TOLERANCE TABLE	
Code	Tolerance
A	± 1% ♦
B	± 2% ♦
C	± 3% ♦
D	± 5%
E	± 10%
None	± 20%
♦ = Temperature Stabilized	

Note: Replace the last digit E with the desired tolerance code from the tolerance table. For an in-between value use the next larger value's dimensions. Custom sizes are readily available. All dimensions are in inches. All +.05" dimension tolerances are Maximum.

METALLIZED POLYCARBONATE WRAP AND FILL, ROUND AXIAL LEAD CAPACITORS



HC
METALLIZED POLYCARBONATE
WRAP & FILL, ROUND
REGULAR SERIES

ORDERING DESCRIPTION

Capacitor, fixed: Metallized Polycarbonate dielectric; extended foil construction; tin-plated copper-clad steel wire axial leads; encased in skin-tight plastic wrap with epoxy end fill.

APPLICATION NOTES

Wrap & Fill capacitors are not intended for exposure to high humidity conditions over extended periods of time. For stringent environmental conditions, Wrap & Fill capacitors should be used in encapsulated or hermetically sealed circuitry.

SELECTION AND ORDERING TABLES Select voltage rating, capacitance and tolerance, read Part Number to the right.

MFD	35VDC 20VAC			50VDC 40VAC			100VDC 70VAC			200VDC 120VAC		
	RATING	D + .05"	L ± .05"	PART #	D + .05"	L ± .05"	PART #	D + .05"	L ± .05"	PART #	D + .05"	L ± .05"
.001	.15	.40	HC.35-102E	.15	.40	HC.5-102E	.15	.40	HC1-102E	.15	.40	HC2-102E
.0027	.15	.40	HC.35-272E	.15	.40	HC.5-272E	.15	.40	HC1-272E	.15	.40	HC2-272E
.0033	.15	.40	HC.35-332E	.15	.40	HC.5-332E	.15	.40	HC1-332E	.15	.40	HC2-332E
.0056	.15	.40	HC.35-562E	.15	.40	HC.5-562E	.15	.40	HC1-562E	.15	.40	HC2-562E
.0068	.15	.40	HC.35-682E	.15	.40	HC.5-682E	.15	.40	HC1-682E	.15	.40	HC2-682E
.0082	.15	.40	HC.35-822E	.15	.40	HC.5-822E	.15	.40	HC1-822E	.15	.40	HC2-822E
.01	.15	.40	HC.35-103E	.15	.40	HC.5-103E	.15	.40	HC1-103E	.17	.40	HC2-103E
.012	.15	.40	HC.35-123E	.15	.40	HC.5-123E	.15	.40	HC1-123E	.17	.40	HC2-123E
.015	.15	.40	HC.35-153E	.15	.40	HC.5-153E	.15	.40	HC1-153E	.18	.40	HC2-153E
.018	.15	.40	HC.35-183E	.15	.40	HC.5-183E	.15	.40	HC1-183E	.19	.40	HC2-183E
.022	.15	.40	HC.35-223E	.15	.40	HC.5-223E	.15	.40	HC1-223E	.20	.40	HC2-223E
.027	.15	.40	HC.35-273E	.15	.40	HC.5-273E	.15	.40	HC1-273E	.17	.53	HC2-273E
.033	.15	.40	HC.35-333E	.15	.40	HC.5-333E	.17	.40	HC1-333E	.18	.53	HC2-333E
.039	.15	.40	HC.35-393E	.15	.40	HC.5-393E	.18	.40	HC1-393E	.19	.53	HC2-393E
.047	.15	.40	HC.35-473E	.15	.40	HC.5-473E	.16	.53	HC1-473E	.21	.53	HC2-473E
.056	.15	.40	HC.35-563E	.15	.40	HC.5-563E	.17	.53	HC1-563E	.23	.53	HC2-563E
.068	.15	.40	HC.35-683E	.16	.40	HC.5-683E	.17	.53	HC1-683E	.25	.53	HC2-683E
.082	.15	.40	HC.35-823E	.17	.40	HC.5-823E	.17	.53	HC1-823E	.27	.53	HC2-823E
.10	.15	.40	HC.35-104E	.18	.40	HC.5-104E	.18	.53	HC1-104E	.28	.53	HC2-104E
.12	.16	.40	HC.35-124E	.19	.40	HC.5-124E	.20	.53	HC1-124E	.30	.53	HC2-124E
.15	.16	.40	HC.35-154E	.16	.53	HC.5-154E	.22	.53	HC1-154E	.29	.65	HC2-154E
.18	.16	.40	HC.35-184E	.17	.53	HC.5-184E	.23	.53	HC1-184E	.30	.65	HC2-184E
.22	.17	.40	HC.35-224E	.18	.53	HC.5-224E	.25	.53	HC1-224E	.33	.65	HC2-224E
.25	.18	.40	HC.35-254E	.19	.53	HC.5-254E	.21	.65	HC1-254E	.31	.78	HC2-254E
.27	.19	.40	HC.35-274E	.20	.53	HC.5-274E	.23	.65	HC1-274E	.32	.78	HC2-274E
.33	.21	.40	HC.35-334E	.21	.53	HC.5-334E	.25	.65	HC1-334E	.35	.78	HC2-334E
.39	.22	.40	HC.35-394E	.23	.53	HC.5-394E	.27	.65	HC1-394E	.37	.78	HC2-394E
.47	.24	.40	HC.35-474E	.25	.53	HC.5-474E	.27	.78	HC1-474E	.41	.78	HC2-474E
.50	.18	.53	HC.35-504E	.26	.53	HC.5-504E	.28	.78	HC1-504E	.42	.78	HC2-504E
.56	.18	.53	HC.35-564E	.27	.53	HC.5-564E	.29	.78	HC1-564E	.40	.97	HC2-564E
.68	.19	.53	HC.35-684E	.30	.53	HC.5-684E	.30	.78	HC1-684E	.42	.97	HC2-684E
.75	.20	.53	HC.35-754E	.31	.53	HC.5-754E	.32	.78	HC1-754E	.44	.97	HC2-754E
.82	.21	.53	HC.35-824E	.26	.65	HC.5-824E	.33	.78	HC1-824E	.41	1.17	HC2-824E
1.0	.23	.53	HC.35-105E	.29	.65	HC.5-105E	.31	.97	HC1-105E	.44	1.17	HC2-105E
1.2	.25	.53	HC.35-125E	.27	.78	HC.5-125E	.32	1.17	HC1-125E	.41	1.68	HC2-125E
1.5	.28	.53	HC.35-155E	.30	.78	HC.5-155E	.33	1.17	HC1-155E	.44	1.68	HC2-155E
1.8	.30	.53	HC.35-185E	.33	.78	HC.5-185E	.34	1.17	HC1-185E	.48	1.68	HC2-185E
2.0	.31	.53	HC.35-205E	.35	.78	HC.5-205E	.38	1.17	HC1-205E	.50	1.68	HC2-205E
3.0	.30	.65	HC.35-305E	.37	.97	HC.5-305E	.46	1.17	HC1-305E	.61	1.68	HC2-305E
4.0	.30	.78	HC.35-405E	.37	1.17	HC.5-405E	.44	1.68	HC1-405E	.69	1.68	HC2-405E
5.0	.34	.78	HC.35-505E	.40	1.17	HC.5-505E	.48	1.68	HC1-505E	.76	1.68	HC2-505E
6.0	.37	.78	HC.35-605E	.45	1.17	HC.5-605E	.52	1.68	HC1-605E	.85	1.68	HC2-605E
8.0	.38	.97	HC.35-805E	.50	1.17	HC.5-805E	.59	1.68	HC1-805E	.96	1.68	HC2-805E
10.0	.43	.97	HC.35-106E	.56	1.17	HC.5-106E	.65	1.68	HC1-106E	1.07	1.68	HC2-106E
12.0	.38	1.17	HC.35-126E	.62	1.17	HC.5-126E	.70	1.68	HC1-126E	1.00	2.25	HC2-126E
15.0	.43	1.17	HC.35-156E	.54	1.68	HC.5-156E	.79	1.68	HC1-156E	1.11	2.25	HC2-156E
20.0	.49	1.17	HC.35-206E	.62	1.68	HC.5-206E	.89	1.68	HC1-206E	1.28	2.25	HC2-206E
30.0	.60	1.17	HC.35-306E	.72	1.68	HC.5-306E	1.09	1.68	HC1-306E	1.53	2.25	HC2-306E
40.0	.68	1.17	HC.35-406E	.80	1.68	HC.5-406E	1.08	2.25	HC1-406E	1.44	3.25	HC2-406E
50.0	.76	1.17	HC.35-506E	.90	1.68	HC.5-506E	1.19	2.25	HC1-506E	1.58	3.25	HC2-506E
75.0	.88	1.45	HC.35-756E	1.09	1.68	HC.5-756E	1.44	2.25	HC1-756E	1.90	3.25	HC2-756E
100.0	.99	1.45	HC.35-107E	1.21	1.68	HC.5-107E	1.65	2.25	HC1-107E	2.17	3.25	HC2-107E

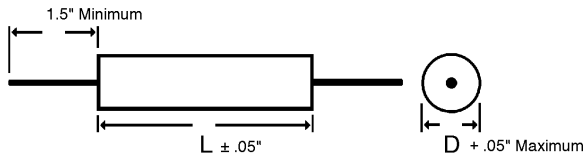
Note: Replace the last digit **E** with the desired tolerance code from the tolerance table. For an in-between value use the next larger value's dimensions. Custom sizes are readily available. All dimensions are in inches. All +.05" dimension tolerances are Maximum.

METALLIZED POLYCARBONATE WRAP AND FILL, ROUND AXIAL LEAD CAPACITORS



HC
METALLIZED POLYCARBONATE
WRAP & FILL, ROUND
REGULAR SERIES

DIMENSIONS See tables for specific D, L values.



WIRE SIZE (Length 1.5" Minimum)

BODY LENGTH (L)	WIRE SIZE	
	AWG No.	Diameter
≤ 0.65"	24	0.020"
> 0.65" ≤ 1.00"	22	0.025"
> 1.00"	20	0.032"

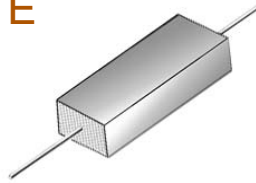
SELECTION AND ORDERING TABLES Select voltage rating, capacitance and tolerance, read Part Number to the right.

MFD	400VDC 230VAC			600VDC 275VAC			1000VDC 480VAC			1500VDC 750VAC		
	RATING	D +.05"	L ±.05"	PART #	D +.05"	L ±.05"	PART #	D +.05"	L ±.05"	PART #	D +.05"	L ±.05"
.001	.15	.40	HC4-102E	.15	.40	HC6-102E	.18	.97	HC10-102E	.18	.97	HC15-102E
.0012	.15	.40	HC4-122E	.15	.40	HC6-122E	.18	.97	HC10-122E	.18	.97	HC15-122E
.0015	.15	.40	HC4-152E	.15	.40	HC6-152E	.20	.97	HC10-152E	.20	.97	HC15-152E
.0018	.15	.40	HC4-182E	.15	.40	HC6-182E	.21	.97	HC10-182E	.21	.97	HC15-182E
.0022	.15	.40	HC4-222E	.15	.40	HC6-222E	.22	.97	HC10-222E	.22	.97	HC15-222E
.0027	.15	.40	HC4-272E	.15	.40	HC6-272E	.22	.97	HC10-272E	.24	.97	HC15-272E
.0033	.16	.40	HC4-332E	.16	.40	HC6-332E	.22	.97	HC10-332E	.27	.97	HC15-332E
.0039	.16	.40	HC4-392E	.16	.53	HC6-392E	.22	.97	HC10-392E	.29	.97	HC15-392E
.0047	.16	.40	HC4-472E	.16	.53	HC6-472E	.23	.97	HC10-472E	.31	.97	HC15-472E
.0056	.16	.53	HC4-562E	.16	.53	HC6-562E	.24	.97	HC10-562E	.33	.97	HC15-562E
.0068	.17	.53	HC4-682E	.17	.53	HC6-682E	.25	.97	HC10-682E	.37	.97	HC15-682E
.0082	.19	.53	HC4-822E	.19	.53	HC6-822E	.27	.97	HC10-822E	.40	.97	HC15-822E
.01	.20	.53	HC4-103E	.23	.53	HC6-103E	.28	.97	HC10-103E	.44	.97	HC15-103E
.012	.22	.53	HC4-123E	.27	.53	HC6-123E	.30	.97	HC10-123E	.49	.97	HC15-123E
.015	.23	.53	HC4-153E	.29	.53	HC6-153E	.33	.97	HC10-153E	.54	.97	HC15-153E
.018	.25	.53	HC4-183E	.30	.53	HC6-183E	.38	.97	HC10-183E	.61	.97	HC15-183E
.022	.28	.53	HC4-223E	.29	.65	HC6-223E	.41	.97	HC10-223E	.47	1.31	HC15-223E
.027	.29	.53	HC4-273E	.30	.65	HC6-273E	.44	.97	HC10-273E	.52	1.31	HC15-273E
.033	.27	.65	HC4-333E	.31	.78	HC6-333E	.49	.97	HC10-333E	.57	1.31	HC15-333E
.039	.29	.65	HC4-393E	.32	.78	HC6-393E	.53	.97	HC10-393E	.62	1.31	HC15-393E
.047	.30	.65	HC4-473E	.34	.78	HC6-473E	.59	.97	HC10-473E	.56	1.68	HC15-473E
.056	.31	.78	HC4-563E	.37	.78	HC6-563E	.47	1.31	HC10-563E	.61	1.68	HC15-563E
.068	.32	.78	HC4-683E	.41	.78	HC6-683E	.51	1.31	HC10-683E	.66	1.68	HC15-683E
.082	.35	.78	HC4-823E	.44	.78	HC6-823E	.55	1.31	HC10-823E	.73	1.68	HC15-823E
.10	.38	.78	HC4-104E	.44	.97	HC6-104E	.60	1.31	HC10-104E	.78	1.68	HC15-104E
.12	.41	.78	HC4-124E	.40	1.17	HC6-124E	.65	1.31	HC10-124E	.85	1.68	HC15-124E
.15	.40	.97	HC4-154E	.44	1.17	HC6-154E	.73	1.31	HC10-154E	.95	1.68	HC15-154E
.18	.43	.97	HC4-184E	.48	1.17	HC6-184E	.79	1.31	HC10-184E	1.05	1.68	HC15-184E
.22	.42	1.17	HC4-224E	.53	1.17	HC6-224E	.72	1.68	HC10-224E	1.16	1.68	HC15-224E
.25	.44	1.17	HC4-254E	.47	1.68	HC6-254E	.76	1.68	HC10-254E	1.25	1.68	HC15-254E
.27	.46	1.17	HC4-274E	.48	1.68	HC6-274E	.79	1.68	HC10-274E	1.28	1.68	HC15-274E
.33	.50	1.17	HC4-334E	.52	1.68	HC6-334E	.87	1.68	HC10-334E	1.08	2.50	HC15-334E
.39	.54	1.17	HC4-394E	.57	1.68	HC6-394E	.94	1.68	HC10-394E	1.17	2.50	HC15-394E
.47	.59	1.17	HC4-474E	.62	1.68	HC6-474E	1.04	1.68	HC10-474E	1.28	2.50	HC15-474E
.50	.50	1.68	HC4-504E	.63	1.68	HC6-504E	1.07	1.68	HC10-504E			
.56	.52	1.68	HC4-564E	.67	1.68	HC6-564E	1.12	1.68	HC10-564E			
.68	.58	1.68	HC4-684E	.69	2.00	HC6-684E	1.23	1.68	HC10-684E			
.75	.60	1.68	HC4-754E	.72	2.00	HC6-754E	1.30	1.68	HC10-754E			
.82	.62	1.68	HC4-824E	.71	2.25	HC6-824E	1.35	1.68	HC10-824E			
1.0	.68	1.68	HC4-105E	.77	2.25	HC6-105E	1.16	2.50	HC10-105E			
1.2	.75	1.68	HC4-125E	.84	2.25	HC6-125E	1.26	2.50	HC10-125E			
1.5	.84	1.68	HC4-155E	.94	2.25	HC6-155E	1.39	2.50	HC10-155E			
1.8	.91	1.68	HC4-185E	1.05	2.25	HC6-185E	1.51	2.50	HC10-185E			
2.0	.96	1.68	HC4-205E	1.08	2.25	HC6-205E	1.58	2.50	HC10-205E			
3.0	1.16	1.68	HC4-305E	1.31	2.25	HC6-305E	1.65	3.25	HC10-305E			
4.0	1.15	2.25	HC4-405E	1.51	2.25	HC6-405E	1.87	3.25	HC10-405E			
5.0	1.28	2.25	HC4-505E	1.65	2.25	HC6-505E	2.10	3.25	HC10-505E			
6.0	1.40	2.25	HC4-605E	1.80	2.25	HC6-605E	2.28	3.25	HC10-605E			
8.0	1.57	2.25	HC4-805E	1.69	3.25	HC6-805E	2.61	3.25	HC10-805E			
10.0	1.74	2.25	HC4-106E	1.87	3.25	HC6-106E	2.89	3.25	HC10-106E			
12.0	1.89	2.25	HC4-126E	2.03	3.25	HC6-126E	3.15	3.25	HC10-126E			
15.0	2.11	2.25	HC4-156E	2.25	3.25	HC6-156E	3.50	3.25	HC10-156E			

TOLERANCE TABLE	
Code	Tolerance
A	± 1% ♦
B	± 2% ♦
C	± 3% ♦
D	± 5%
E	± 10%
None	± 20%
♦ = Temperature Stabilized	

Note: Replace the last digit E with the desired tolerance code from the tolerance table. For an in-between value use the next larger value's dimensions. Custom sizes are readily available. All dimensions are in inches. All +.05" dimension tolerances are Maximum.

METALLIZED POLYCARBONATE EPOXY CASE, AXIAL LEAD, RECTANGULAR CAPACITORS



HE
METALLIZED POLYCARBONATE
EPOXY CASE, AXIAL, RECT.
REGULAR SERIES

ORDERING DESCRIPTION

Capacitor, fixed: Metallized Polycarbonate dielectric; extended foil construction; tin-plated copper-clad steel wire axial leads; encased in a molded epoxy/plastic shell with epoxy fill.

APPLICATION NOTES

Epoxy Case capacitors are not intended for exposure to high humidity conditions over extended periods of time. For stringent environmental conditions, Epoxy Case capacitors should be used in encapsulated or hermetically sealed circuitry.

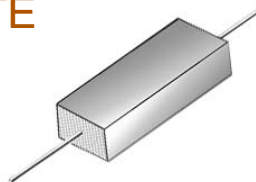
SELECTION AND ORDERING TABLES

Select voltage rating, capacitance and tolerance, read Part Number to the right.

MFD	35VDC 20VAC				50VDC 40VAC				100VDC 70VAC				200VDC 120VAC			
	T	W	L	PART #	T	W	L	PART #	T	W	L	PART #	T	W	L	PART #
RATING	± .01"	± .01"	± .03"		± .01"	± .01"	± .03"		± .01"	± .01"	± .03"		± .01"	± .01"	± .03"	
.001	.17	.29	.42	HE.35-102E	.17	.29	.42	HE.5-102E	.17	.29	.42	HE1-102E	.17	.29	.42	HE2-102E
.0027	.17	.29	.42	HE.35-272E	.17	.29	.42	HE.5-272E	.17	.29	.42	HE1-272E	.17	.29	.42	HE2-272E
.0033	.17	.29	.42	HE.35-332E	.17	.29	.42	HE.5-332E	.17	.29	.42	HE1-332E	.17	.29	.42	HE2-332E
.0056	.17	.29	.42	HE.35-562E	.17	.29	.42	HE.5-562E	.17	.29	.42	HE1-562E	.17	.29	.42	HE2-562E
.0068	.17	.29	.42	HE.35-682E	.17	.29	.42	HE.5-682E	.17	.29	.42	HE1-682E	.17	.29	.42	HE2-682E
.0082	.17	.29	.42	HE.35-822E	.17	.29	.42	HE.5-822E	.17	.29	.42	HE1-822E	.17	.29	.42	HE2-822E
.01	.17	.29	.42	HE.35-103E	.17	.29	.42	HE.5-103E	.17	.29	.42	HE1-103E	.17	.29	.42	HE2-103E
.012	.17	.29	.42	HE.35-123E	.17	.29	.42	HE.5-123E	.17	.29	.42	HE1-123E	.17	.29	.42	HE2-123E
.015	.17	.29	.42	HE.35-153E	.17	.29	.42	HE.5-153E	.17	.29	.42	HE1-153E	.17	.29	.42	HE2-153E
.018	.17	.29	.42	HE.35-183E	.17	.29	.42	HE.5-183E	.17	.29	.42	HE1-183E	.17	.29	.42	HE2-183E
.022	.17	.29	.42	HE.35-223E	.17	.29	.42	HE.5-223E	.17	.29	.42	HE1-223E	.17	.29	.57	HE2-223E
.027	.17	.29	.42	HE.35-273E	.17	.29	.42	HE.5-273E	.17	.29	.42	HE1-273E	.17	.29	.57	HE2-273E
.033	.17	.29	.42	HE.35-333E	.17	.29	.42	HE.5-333E	.17	.29	.42	HE1-333E	.17	.29	.57	HE2-333E
.039	.17	.29	.42	HE.35-393E	.17	.29	.42	HE.5-393E	.17	.29	.42	HE1-393E	.17	.29	.57	HE2-393E
.047	.17	.29	.42	HE.35-473E	.17	.29	.42	HE.5-473E	.17	.29	.57	HE1-473E	.23	.36	.55	HE2-473E
.056	.17	.29	.42	HE.35-563E	.17	.29	.42	HE.5-563E	.17	.29	.57	HE1-563E	.23	.36	.55	HE2-563E
.068	.17	.29	.42	HE.35-683E	.17	.29	.42	HE.5-683E	.17	.29	.57	HE1-683E	.23	.36	.55	HE2-683E
.082	.17	.29	.42	HE.35-823E	.17	.29	.42	HE.5-823E	.23	.36	.55	HE1-823E	.29	.42	.57	HE2-823E
.10	.17	.29	.42	HE.35-104E	.17	.29	.42	HE.5-104E	.23	.36	.55	HE1-104E	.29	.42	.57	HE2-104E
.12	.17	.29	.42	HE.35-124E	.17	.29	.42	HE.5-124E	.23	.36	.55	HE1-124E	.29	.42	.57	HE2-124E
.15	.17	.29	.42	HE.35-154E	.17	.29	.57	HE.5-154E	.23	.36	.55	HE1-154E	.29	.42	.67	HE2-154E
.18	.17	.29	.42	HE.35-184E	.17	.29	.57	HE.5-184E	.29	.42	.57	HE1-184E	.29	.42	.67	HE2-184E
.22	.17	.29	.42	HE.35-224E	.23	.36	.55	HE.5-224E	.29	.42	.57	HE1-224E	.29	.42	.82	HE2-224E
.25	.23	.36	.42	HE.35-254E	.23	.36	.55	HE.5-254E	.29	.42	.67	HE1-254E	.29	.42	.82	HE2-254E
.27	.23	.36	.42	HE.35-274E	.23	.36	.55	HE.5-274E	.29	.42	.67	HE1-274E	.29	.42	.82	HE2-274E
.33	.23	.36	.42	HE.35-334E	.23	.36	.55	HE.5-334E	.29	.42	.67	HE1-334E	.39	.54	.82	HE2-334E
.39	.23	.36	.42	HE.35-394E	.23	.36	.55	HE.5-394E	.29	.42	.67	HE1-394E	.39	.54	.82	HE2-394E
.47	.23	.36	.42	HE.35-474E	.29	.42	.57	HE.5-474E	.29	.42	.82	HE1-474E	.39	.54	.82	HE2-474E
.50	.17	.29	.55	HE.35-504E	.29	.42	.57	HE.5-504E	.29	.42	.82	HE1-504E	.39	.54	.82	HE2-504E
.56	.17	.29	.55	HE.35-564E	.29	.42	.57	HE.5-564E	.39	.54	.82	HE1-564E	.39	.54	1.04	HE2-564E
.68	.23	.36	.55	HE.35-684E	.29	.42	.57	HE.5-684E	.39	.54	.82	HE1-684E	.39	.54	1.04	HE2-684E
.75	.23	.36	.55	HE.35-754E	.29	.42	.57	HE.5-754E	.39	.54	.82	HE1-754E	.39	.54	1.19	HE2-754E
.82	.23	.36	.55	HE.35-824E	.29	.42	.67	HE.5-824E	.39	.54	.82	HE1-824E	.39	.54	1.19	HE2-824E
1.0	.23	.36	.55	HE.35-105E	.29	.42	.67	HE.5-105E	.39	.54	1.04	HE1-105E	.56	.72	1.24	HE2-105E
1.2	.29	.42	.55	HE.35-125E	.39	.54	.82	HE.5-125E	.39	.54	1.19	HE1-125E	.56	.72	1.24	HE2-125E
1.5	.29	.42	.55	HE.35-155E	.39	.54	.82	HE.5-155E	.39	.54	1.19	HE1-155E	.56	.72	1.24	HE2-155E
1.8	.29	.42	.55	HE.35-185E	.39	.54	.82	HE.5-185E	.56	.72	1.24	HE1-185E	.56	.72	1.75	HE2-185E
2.0	.29	.42	.67	HE.35-205E	.39	.54	.82	HE.5-205E	.56	.72	1.24	HE1-205E	.56	.72	1.75	HE2-205E
3.0	.29	.42	.67	HE.35-305E	.39	.54	1.04	HE.5-305E	.56	.72	1.24	HE1-305E	.56	.72	1.75	HE2-305E
4.0	.39	.54	.82	HE.35-405E	.56	.72	1.24	HE.5-405E	.56	.72	1.75	HE1-405E	.76	.96	1.75	HE2-405E
5.0	.39	.54	.82	HE.35-505E	.56	.72	1.24	HE.5-505E	.56	.72	1.75	HE1-505E	.76	.96	1.75	HE2-505E
6.0	.39	.54	.82	HE.35-605E	.56	.72	1.24	HE.5-605E	.56	.72	1.75	HE1-605E	.76	.96	1.75	HE2-605E
8.0	.50	.68	1.04	HE.35-805E	.56	.72	1.24	HE.5-805E	.56	.72	1.75	HE1-805E	.97	1.21	1.75	HE2-805E
10.0	.50	.68	1.04	HE.35-106E	.56	.72	1.24	HE.5-106E	.56	.72	1.75	HE1-106E	.97	1.21	1.75	HE2-106E
12.0	.50	.68	1.24	HE.35-126E	.56	.72	1.24	HE.5-126E	.76	.96	1.75	HE1-126E	.97	1.21	2.25	HE2-126E
15.0	.50	.68	1.24	HE.35-156E	.56	.72	1.75	HE.5-156E	.76	.96	1.75	HE1-156E	.97	1.21	2.25	HE2-156E
20.0	.50	.68	1.24	HE.35-206E	.56	.72	1.75	HE.5-206E	.97	1.21	1.75	HE1-206E	1.23	1.60	2.25	HE2-206E
30.0	.58	.79	1.24	HE.35-306E	.76	.96	1.75	HE.5-306E	.97	1.21	1.75	HE1-306E	1.59	1.81	2.25	HE2-306E
40.0	.76	.96	1.24	HE.35-406E	.76	.96	1.75	HE.5-406E	.97	1.21	2.25	HE1-406E	1.88	2.36	3.25	HE2-406E
50.0	.76	.96	1.24	HE.35-506E	.76	.96	1.75	HE.5-506E	1.23	1.60	2.25	HE1-506E	1.88	2.36	3.25	HE2-506E
75.0	.97	1.21	1.50	HE.35-756E	.97	1.21	1.75	HE.5-756E	1.59	1.81	2.25	HE1-756E	1.88	2.36	3.25	HE2-756E
100.0	.97	1.21	1.50	HE.35-107E	1.23	1.60	1.75	HE.5-107E	1.59	1.81	2.25	HE1-107E	2.18	2.27	3.25	HE2-107E

Note: Replace the last digit **E** with the desired tolerance code from the tolerance table. For an in-between value use the next larger value's dimensions. Custom sizes are readily available. All dimensions are in inches.

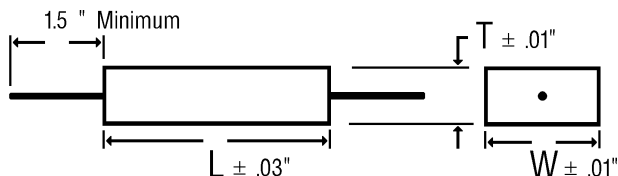
METALLIZED POLYCARBONATE EPOXY CASE, AXIAL LEAD RECTANGULAR CAPACITORS



HE
METALLIZED POLYCARBONATE
EPOXY CASE, AXIAL RECT.
REGULAR SERIES

DIMENSIONS See tables for specific T, W, L values.

WIRE SIZE (Length 1.5" Minimum)



BODY LENGTH (L)	WIRE SIZE	
	AWG No.	Diameter
≤ 0.67"	24	0.020"
> 0.67" ≤ 1.06"	22	0.025"
> 1.06"	20	0.032"

SELECTION AND ORDERING TABLES Select voltage rating, capacitance and tolerance, read Part Number to the right.

MFD	400VDC 230VAC				600VDC 275VAC				1000VDC 480VAC				1500VDC 750VAC			
	RATING	T	W	L	PART #	T	W	L	PART #	T	W	L	PART #	T	W	L
	± .01"	± .01"	± .03"		± .01"	± .01"	± .03"		± .01"	± .01"	± .03"		± .01"	± .01"	± .03"	
.001	.17	.29	.42	HE4-102E	.17	.29	.42	HE6-102E	.29	.42	1.06	HE10-102E	.29	.42	1.06	HE15-102E
.0012	.17	.29	.42	HE4-122E	.17	.29	.42	HE6-122E	.29	.42	1.06	HE10-122E	.29	.42	1.06	HE15-122E
.0015	.17	.29	.42	HE4-152E	.17	.29	.42	HE6-152E	.29	.42	1.06	HE10-152E	.29	.42	1.06	HE15-152E
.0018	.17	.29	.42	HE4-182E	.17	.29	.42	HE6-182E	.29	.42	1.06	HE10-182E	.29	.42	1.06	HE15-182E
.0022	.17	.29	.42	HE4-222E	.17	.29	.42	HE6-222E	.29	.42	1.06	HE10-222E	.29	.42	1.06	HE15-222E
.0027	.17	.29	.42	HE4-272E	.17	.29	.42	HE6-272E	.29	.42	1.06	HE10-272E	.29	.42	1.06	HE15-272E
.0033	.17	.29	.42	HE4-332E	.17	.29	.42	HE6-332E	.29	.42	1.06	HE10-332E	.29	.42	1.06	HE15-332E
.0039	.17	.29	.42	HE4-392E	.17	.29	.57	HE6-392E	.29	.42	1.06	HE10-392E	.29	.42	1.06	HE15-392E
.0047	.17	.29	.42	HE4-472E	.17	.29	.57	HE6-472E	.29	.42	1.06	HE10-472E	.29	.42	1.06	HE15-472E
.0056	.17	.29	.57	HE4-562E	.17	.29	.57	HE6-562E	.29	.42	1.06	HE10-562E	.39	.54	1.06	HE15-562E
.0068	.17	.29	.57	HE4-682E	.23	.36	.55	HE6-682E	.29	.42	1.06	HE10-682E	.39	.54	1.06	HE15-682E
.0082	.17	.29	.57	HE4-822E	.23	.36	.55	HE6-822E	.29	.42	1.06	HE10-822E	.39	.54	1.06	HE15-822E
.01	.17	.29	.57	HE4-103E	.23	.36	.55	HE6-103E	.29	.42	1.06	HE10-103E	.56	.72	1.06	HE15-103E
.012	.23	.36	.55	HE4-123E	.23	.36	.55	HE6-123E	.29	.42	1.06	HE10-123E	.56	.72	1.06	HE15-123E
.015	.23	.36	.55	HE4-153E	.29	.42	.57	HE6-153E	.39	.54	1.06	HE10-153E	.56	.72	1.06	HE15-153E
.018	.23	.36	.55	HE4-183E	.29	.42	.57	HE6-183E	.39	.54	1.06	HE10-183E	.56	.72	1.06	HE15-183E
.022	.29	.42	.57	HE4-223E	.29	.42	.67	HE6-223E	.39	.54	1.06	HE10-223E	.56	.72	1.35	HE15-223E
.027	.29	.42	.57	HE4-273E	.29	.42	.67	HE6-273E	.56	.72	1.06	HE10-273E	.56	.72	1.35	HE15-273E
.033	.29	.42	.67	HE4-333E	.29	.42	.82	HE6-333E	.56	.72	1.06	HE10-333E	.56	.72	1.35	HE15-333E
.039	.29	.42	.67	HE4-393E	.29	.42	.82	HE6-393E	.56	.72	1.06	HE10-393E	.56	.72	1.35	HE15-393E
.047	.29	.42	.67	HE4-473E	.39	.54	.82	HE6-473E	.56	.72	1.06	HE10-473E	.56	.72	1.75	HE15-473E
.056	.29	.42	.82	HE4-563E	.39	.54	.82	HE6-563E	.56	.72	1.35	HE10-563E	.56	.72	1.75	HE15-563E
.068	.29	.42	.82	HE4-683E	.39	.54	.82	HE6-683E	.56	.72	1.35	HE10-683E	.56	.72	1.75	HE15-683E
.082	.39	.54	.82	HE4-823E	.39	.54	1.04	HE6-823E	.56	.72	1.35	HE10-823E	.76	.96	1.75	HE15-823E
.10	.39	.54	.82	HE4-104E	.39	.54	1.04	HE6-104E	.56	.72	1.35	HE10-104E	.76	.96	1.75	HE15-104E
.12	.39	.54	.82	HE4-124E	.39	.54	1.19	HE6-124E	.56	.72	1.35	HE10-124E	.97	1.21	1.75	HE15-124E
.15	.39	.54	1.04	HE4-154E	.56	.72	1.24	HE6-154E	.76	.96	1.35	HE10-154E	.97	1.21	1.75	HE15-154E
.18	.39	.54	1.04	HE4-184E	.56	.72	1.24	HE6-184E	.76	.96	1.35	HE10-184E	.97	1.21	1.75	HE15-184E
.22	.39	.54	1.19	HE4-224E	.56	.72	1.24	HE6-224E	.76	.96	1.75	HE10-224E	1.23	1.60	1.75	HE15-224E
.25	.56	.72	1.24	HE4-254E	.56	.72	1.24	HE6-254E	.76	.96	1.75	HE10-254E	1.23	1.60	1.75	HE15-254E
.27	.56	.72	1.24	HE4-274E	.56	.72	1.24	HE6-274E	.76	.96	1.75	HE10-274E	1.23	1.60	1.75	HE15-274E
.33	.56	.72	1.24	HE4-334E	.56	.72	1.75	HE6-334E	.97	1.21	1.75	HE10-334E	1.23	1.60	2.50	HE15-334E
.39	.56	.72	1.24	HE4-394E	.56	.72	1.75	HE6-394E	.97	1.21	1.75	HE10-394E	1.23	1.60	2.50	HE15-394E
.47	.56	.72	1.24	HE4-474E	.76	.96	1.75	HE6-474E	.97	1.21	1.75	HE10-474E	1.23	1.60	2.50	HE15-474E
.50	.56	.72	1.75	HE4-504E	.76	.96	1.75	HE6-504E	.97	1.21	1.75	HE10-504E				
.56	.56	.72	1.75	HE4-564E	.76	.96	1.75	HE6-564E	1.23	1.60	1.75	HE10-564E				
.68	.56	.72	1.75	HE4-684E	.76	.96	1.75	HE6-684E	1.23	1.60	1.75	HE10-684E				
.75	.56	.72	1.75	HE4-754E	.76	.96	1.75	HE6-754E	1.23	1.60	1.75	HE10-754E				
.82	.76	.96	1.75	HE4-824E	.76	.96	1.75	HE6-824E	1.23	1.60	1.75	HE10-824E				
1.0	.76	.96	1.75	HE4-105E	.97	1.21	1.75	HE6-105E	1.23	1.60	2.50	HE10-105E				
1.2	.76	.96	1.75	HE4-125E	.97	1.21	1.75	HE6-125E	1.23	1.60	2.50	HE10-125E				
1.5	.76	.96	1.75	HE4-155E	1.23	1.60	1.75	HE6-155E	1.23	1.60	2.50	HE10-155E				
1.8	.97	1.21	1.75	HE4-185E	1.23	1.60	1.75	HE6-185E	1.59	1.81	2.50	HE10-185E				
2.0	.97	1.21	1.75	HE4-205E	1.23	1.60	1.75	HE6-205E	1.59	1.81	2.50	HE10-205E				
3.0	1.23	1.60	1.75	HE4-305E	1.23	1.60	2.25	HE6-305E	1.59	1.81	3.25	HE10-305E				
4.0	1.23	1.60	1.75	HE4-405E	1.59	1.81	2.25	HE6-405E	1.88	2.36	3.25	HE10-405E				
5.0	1.23	1.60	2.25	HE4-505E	1.59	1.81	2.25	HE6-505E	2.18	2.27	3.25	HE10-505E				
6.0	1.59	1.81	2.25	HE4-605E	1.88	2.36	2.25	HE6-605E								
8.0	1.59	1.81	2.25	HE4-805E	1.88	2.36	3.25	HE6-805E								
10.0	1.88	2.36	2.25	HE4-106E	1.88	2.36	3.25	HE6-106E								
12.0	1.88	2.36	2.25	HE4-126E	1.88	2.36	3.25	HE6-126E								
15.0	2.18	2.27	2.25	HE4-156E												

TOLERANCE TABLE

Code Tolerance

A = ± 1% ♦

B = ± 2% ♦

C = ± 3% ♦

D = ± 5%

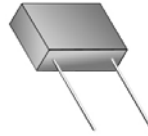
E = ± 10%

None = ± 20%

♦ = Temperature Stabilized

Note: Replace the last digit E with the desired tolerance code from the tolerance table. For an in-between value use the next larger value's dimensions. Custom sizes are readily available. All dimensions are in inches.

METALLIZED POLYCARBONATE EPOXY CASE, RADIAL LEAD, RECTANGULAR CAPACITORS



H2E

METALLIZED POLYCARBONATE
EPOXY CASE, RADIAL, RECT.
REGULAR SERIES

ORDERING DESCRIPTION

Capacitor, fixed: Metallized Polycarbonate dielectric; extended foil construction; tin-plated copper-clad steel wire radial leads; encased in a molded epoxy/plastic shell with epoxy fill.

APPLICATION NOTES

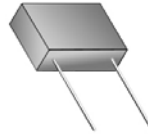
Epoxy Case capacitors are not intended for exposure to high humidity conditions over extended periods of time. For stringent environmental conditions, Epoxy Case capacitors should be used in encapsulated or hermetically sealed circuitry.

SELECTION AND ORDERING TABLES Select voltage rating, capacitance and tolerance, read Part Number to the right.

MFD	35VDC 20VAC				50VDC 40VAC				100VDC 70VAC				200VDC 120VAC				
	RATING	T	H	L	PART #	T	H	L	PART #	T	H	L	PART #	T	H	L	PART #
	± .01"	± .01"	± .01"		± .01"	± .01"	± .01"		± .01"	± .01"	± .01"		± .01"	± .01"	± .01"		± .01"
.001	.18	.30	.42	H2E.35-102E	.18	.30	.42	H2E.5-102E	.18	.30	.42	H2E1-102E	.18	.30	.42	H2E2-102E	
.0012	.18	.30	.42	H2E.35-122E	.18	.30	.42	H2E.5-122E	.18	.30	.42	H2E1-122E	.18	.30	.42	H2E2-122E	
.0018	.18	.30	.42	H2E.35-182E	.18	.30	.42	H2E.5-182E	.18	.30	.42	H2E1-182E	.18	.30	.42	H2E2-182E	
.0022	.18	.30	.42	H2E.35-222E	.18	.30	.42	H2E.5-222E	.18	.30	.42	H2E1-222E	.18	.30	.42	H2E2-222E	
.0027	.18	.30	.42	H2E.35-272E	.18	.30	.42	H2E.5-272E	.18	.30	.42	H2E1-272E	.18	.30	.42	H2E2-272E	
.0033	.18	.30	.42	H2E.35-332E	.18	.30	.42	H2E.5-332E	.18	.30	.42	H2E1-332E	.18	.30	.42	H2E2-332E	
.0047	.18	.30	.42	H2E.35-472E	.18	.30	.42	H2E.5-472E	.18	.30	.42	H2E1-472E	.18	.30	.42	H2E2-472E	
.0056	.18	.30	.42	H2E.35-562E	.18	.30	.42	H2E.5-562E	.18	.30	.42	H2E1-562E	.18	.30	.42	H2E2-562E	
.0068	.18	.30	.42	H2E.35-682E	.18	.30	.42	H2E.5-682E	.18	.30	.42	H2E1-682E	.18	.30	.42	H2E2-682E	
.0082	.18	.30	.42	H2E.35-822E	.18	.30	.42	H2E.5-822E	.18	.30	.42	H2E1-822E	.18	.30	.42	H2E2-822E	
.01	.18	.30	.42	H2E.35-103E	.18	.30	.42	H2E.5-103E	.18	.30	.42	H2E1-103E	.18	.30	.42	H2E2-103E	
.012	.18	.30	.42	H2E.35-123E	.18	.30	.42	H2E.5-123E	.18	.30	.42	H2E1-123E	.18	.30	.42	H2E2-123E	
.015	.18	.30	.42	H2E.35-153E	.18	.30	.42	H2E.5-153E	.18	.30	.42	H2E1-153E	.18	.30	.42	H2E2-153E	
.018	.18	.30	.42	H2E.35-183E	.18	.30	.42	H2E.5-183E	.18	.30	.42	H2E1-183E	.18	.30	.42	H2E2-183E	
.022	.18	.30	.42	H2E.35-223E	.18	.30	.42	H2E.5-223E	.18	.30	.42	H2E1-223E	.18	.30	.55	H2E2-223E	
.027	.18	.30	.42	H2E.35-273E	.18	.30	.42	H2E.5-273E	.18	.30	.42	H2E1-273E	.18	.30	.55	H2E2-273E	
.033	.18	.30	.42	H2E.35-333E	.18	.30	.42	H2E.5-333E	.18	.30	.42	H2E1-333E	.18	.30	.55	H2E2-333E	
.039	.18	.30	.42	H2E.35-393E	.18	.30	.42	H2E.5-393E	.18	.30	.42	H2E1-393E	.18	.30	.55	H2E2-393E	
.047	.18	.30	.42	H2E.35-473E	.18	.30	.42	H2E.5-473E	.18	.30	.55	H2E1-473E	.24	.37	.55	H2E2-473E	
.056	.18	.30	.42	H2E.35-563E	.18	.30	.42	H2E.5-563E	.18	.30	.55	H2E1-563E	.24	.37	.55	H2E2-563E	
.068	.18	.30	.42	H2E.35-683E	.18	.30	.42	H2E.5-683E	.18	.30	.55	H2E1-683E	.24	.37	.55	H2E2-683E	
.082	.18	.30	.42	H2E.35-823E	.18	.30	.42	H2E.5-823E	.24	.37	.55	H2E1-823E	.30	.43	.55	H2E2-823E	
.10	.18	.30	.42	H2E.35-104E	.18	.30	.42	H2E.5-104E	.24	.37	.55	H2E1-104E	.30	.43	.55	H2E2-104E	
.12	.18	.30	.42	H2E.35-124E	.18	.30	.42	H2E.5-124E	.24	.37	.55	H2E1-124E	.30	.43	.55	H2E2-124E	
.15	.18	.30	.42	H2E.35-154E	.18	.30	.55	H2E.5-154E	.24	.37	.55	H2E1-154E	.30	.43	.67	H2E2-154E	
.18	.18	.30	.42	H2E.35-184E	.18	.30	.55	H2E.5-184E	.30	.43	.55	H2E1-184E	.30	.43	.67	H2E2-184E	
.22	.18	.30	.42	H2E.35-224E	.24	.37	.55	H2E.5-224E	.30	.43	.55	H2E1-224E	.30	.43	.82	H2E2-224E	
.25	.18	.30	.42	H2E.35-254E	.24	.37	.55	H2E.5-254E	.30	.43	.67	H2E1-254E	.30	.43	.82	H2E2-254E	
.27	.18	.30	.42	H2E.35-274E	.24	.37	.55	H2E.5-274E	.30	.43	.67	H2E1-274E	.30	.43	.82	H2E2-274E	
.33	.18	.30	.42	H2E.35-334E	.24	.37	.55	H2E.5-334E	.30	.43	.67	H2E1-334E	.40	.55	.82	H2E2-334E	
.39	.18	.30	.55	H2E.35-394E	.24	.37	.55	H2E.5-394E	.30	.43	.67	H2E1-394E	.40	.55	.82	H2E2-394E	
.47	.18	.30	.55	H2E.35-474E	.30	.43	.55	H2E.5-474E	.30	.43	.82	H2E1-474E	.40	.55	.82	H2E2-474E	
.50	.18	.30	.55	H2E.35-504E	.30	.43	.55	H2E.5-504E	.30	.43	.82	H2E1-504E	.40	.55	.82	H2E2-504E	
.56	.18	.30	.55	H2E.35-564E	.30	.43	.55	H2E.5-564E	.40	.55	.82	H2E1-564E	.40	.55	1.04	H2E2-564E	
.68	.24	.37	.55	H2E.35-684E	.30	.43	.55	H2E.5-684E	.40	.55	.82	H2E1-684E	.40	.55	1.04	H2E2-684E	
.75	.24	.37	.55	H2E.35-754E	.30	.43	.55	H2E.5-754E	.40	.55	.82	H2E1-754E	.40	.55	1.24	H2E2-754E	
.82	.24	.37	.55	H2E.35-824E	.30	.43	.67	H2E.5-824E	.40	.55	.82	H2E1-824E	.40	.55	1.24	H2E2-824E	
1.0	.24	.37	.55	H2E.35-105E	.30	.43	.67	H2E.5-105E	.40	.55	1.04	H2E1-105E	.57	.73	1.24	H2E2-105E	
1.2	.24	.37	.55	H2E.35-125E	.40	.55	.82	H2E.5-125E	.40	.55	1.24	H2E1-125E	.57	.73	1.24	H2E2-125E	
1.5	.30	.43	.55	H2E.35-155E	.40	.55	.82	H2E.5-155E	.40	.55	1.24	H2E1-155E	.57	.73	1.24	H2E2-155E	
1.8	.30	.43	.55	H2E.35-185E	.40	.55	.82	H2E.5-185E	.57	.73	1.24	H2E1-185E	.57	.73	1.75	H2E2-185E	
2.0	.30	.43	.67	H2E.35-205E	.40	.55	.82	H2E.5-205E	.57	.73	1.24	H2E1-205E	.57	.73	1.75	H2E2-205E	
3.0	.30	.43	.67	H2E.35-305E	.40	.55	1.04	H2E.5-305E	.57	.73	1.24	H2E1-305E	.57	.73	1.75	H2E2-305E	
4.0	.30	.43	.82	H2E.35-405E	.57	.73	1.24	H2E.5-405E	.57	.73	1.75	H2E1-405E	.70	1.13	1.75	H2E2-405E	
5.0	.40	.55	.82	H2E.35-505E	.57	.73	1.24	H2E.5-505E	.57	.73	1.75	H2E1-505E	.70	1.13	1.75	H2E2-505E	
6.0	.40	.55	.82	H2E.35-605E	.57	.73	1.24	H2E.5-605E	.57	.73	1.75	H2E1-605E	.80	1.13	1.75	H2E2-605E	
8.0	.40	.55	1.04	H2E.35-805E	.57	.73	1.24	H2E.5-805E	.57	.73	1.75	H2E1-805E	.80	1.13	1.75	H2E2-805E	
10.0	.40	.55	1.04	H2E.35-106E	.57	.73	1.24	H2E.5-106E	.70	1.13	1.75	H2E1-106E	1.27	1.40	1.77	H2E2-106E	
12.0	.57	.73	1.24	H2E.35-126E	.57	.73	1.24	H2E.5-126E	.70	1.13	1.75	H2E1-126E	1.27	1.40	1.77	H2E2-126E	
15.0	.57	.73	1.24	H2E.35-156E	.57	.73	1.75	H2E.5-156E	.70	1.13	1.75	H2E1-156E	1.27	1.40	1.77	H2E2-156E	
18.0	.57	.73	1.24	H2E.35-186E	.57	.73	1.75	H2E.5-186E	.80	1.13	1.75	H2E1-186E					
20.0	.57	.73	1.24	H2E.35-206E	.57	.73	1.75	H2E.5-206E	.80	1.13	1.75	H2E1-206E					

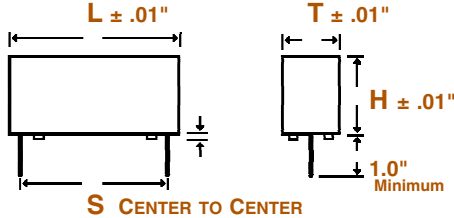
Note: Replace the last digit **E** with the desired tolerance code from the tolerance table. For an in-between value use the next larger value's dimensions. Custom sizes are readily available. All dimensions are in inches.

METALLIZED POLYCARBONATE EPOXY CASE, RADIAL LEAD, RECTANGULAR CAPACITORS



H2E
METALLIZED POLYCARBONATE
EPOXY CASE, RADIAL, RECT.
REGULAR SERIES

DIMENSIONS See tables for specific T, H, L, S values.



** The mounting pads consist of two individual pads on each end or one continuous pad on each end, depending on the mold. (Not an option).

WIRE SIZE (Length 1.0" Minimum)

BODY LENGTH (L)	LEAD SPACING (S) (C to C ± .01")	WIRE SIZE	
		AWG No.	Diameter
.42"	.300"	22	0.025"
.55"	.400"	22	0.025"
.67"	.500"	22	0.025"
.82"	.600"	22	0.025"
1.04"	.800"	22	0.025"
1.24"	1.100"	20	0.032"
1.75"	1.600"	20	0.032"

SELECTION AND ORDERING TABLES Select voltage rating, capacitance and tolerance, read Part Number to the right.

MFD	400VDC 230VAC				600VDC 275VAC				1000VDC 480VAC				1500VDC 750VAC			
	RATING	T	H	L	PART #	T	H	L	PART #	T	H	L	PART #	T	H	L
	± .01"	± .01"	± .01"		± .01"	± .01"	± .01"		± .01"	± .01"	± .01"		± .01"	± .01"	± .01"	
.001	.18	.30	.42	H2E4-102E	.18	.30	.42	H2E6-102E	.40	.55	1.04	H2E10-102E	.40	.55	1.04	H2E15-102E
.0012	.18	.30	.42	H2E4-122E	.18	.30	.42	H2E6-122E	.40	.55	1.04	H2E10-122E	.40	.55	1.04	H2E15-122E
.0015	.18	.30	.42	H2E4-152E	.18	.30	.42	H2E6-152E	.40	.55	1.04	H2E10-152E	.40	.55	1.04	H2E15-152E
.0018	.18	.30	.42	H2E4-182E	.18	.30	.42	H2E6-182E	.40	.55	1.04	H2E10-182E	.40	.55	1.04	H2E15-182E
.0022	.18	.30	.42	H2E4-222E	.18	.30	.42	H2E6-222E	.40	.55	1.04	H2E10-222E	.40	.55	1.04	H2E15-222E
.0027	.18	.30	.42	H2E4-272E	.18	.30	.42	H2E6-272E	.40	.55	1.04	H2E10-272E	.40	.55	1.04	H2E15-272E
.0033	.18	.30	.42	H2E4-332E	.18	.30	.42	H2E6-332E	.40	.55	1.04	H2E10-332E	.40	.55	1.04	H2E15-332E
.0039	.18	.30	.42	H2E4-392E	.18	.30	.55	H2E6-392E	.40	.55	1.04	H2E10-392E	.40	.55	1.04	H2E15-392E
.0047	.18	.30	.42	H2E4-472E	.18	.30	.55	H2E6-472E	.40	.55	1.04	H2E10-472E	.40	.55	1.04	H2E15-472E
.0056	.18	.30	.55	H2E4-562E	.18	.30	.55	H2E6-562E	.40	.55	1.04	H2E10-562E	.40	.55	1.04	H2E15-562E
.0068	.18	.30	.55	H2E4-682E	.24	.37	.55	H2E6-682E	.40	.55	1.04	H2E10-682E	.40	.55	1.04	H2E15-682E
.0082	.18	.30	.55	H2E4-822E	.24	.37	.55	H2E6-822E	.40	.55	1.04	H2E10-822E	.40	.55	1.04	H2E15-822E
.01	.18	.30	.55	H2E4-103E	.24	.37	.55	H2E6-103E	.40	.55	1.04	H2E10-103E	.57	.73	1.24	H2E15-103E
.012	.24	.37	.55	H2E4-123E	.24	.37	.55	H2E6-123E	.40	.55	1.04	H2E10-123E	.57	.73	1.24	H2E15-123E
.015	.24	.37	.55	H2E4-153E	.30	.43	.55	H2E6-153E	.40	.55	1.04	H2E10-153E	.57	.73	1.24	H2E15-153E
.018	.24	.37	.55	H2E4-183E	.30	.43	.55	H2E6-183E	.40	.55	1.04	H2E10-183E	.57	.73	1.24	H2E15-183E
.022	.30	.43	.55	H2E4-223E	.30	.43	.67	H2E6-223E	.40	.55	1.04	H2E10-223E	.57	.73	1.75	H2E15-223E
.027	.30	.43	.55	H2E4-273E	.30	.43	.67	H2E6-273E	.57	.73	1.24	H2E10-273E	.57	.73	1.75	H2E15-273E
.033	.30	.43	.67	H2E4-333E	.30	.43	.82	H2E6-333E	.57	.73	1.24	H2E10-333E	.57	.73	1.75	H2E15-333E
.039	.30	.43	.67	H2E4-393E	.30	.43	.82	H2E6-393E	.57	.73	1.24	H2E10-393E	.57	.73	1.75	H2E15-393E
.047	.30	.43	.67	H2E4-473E	.40	.55	.82	H2E6-473E	.57	.73	1.24	H2E10-473E	.57	.73	1.75	H2E15-473E
.056	.30	.43	.82	H2E4-563E	.40	.55	.82	H2E6-563E	.57	.73	1.75	H2E10-563E	.57	.73	1.75	H2E15-563E
.068	.30	.43	.82	H2E4-683E	.40	.55	.82	H2E6-683E	.57	.73	1.75	H2E10-683E	.70	1.13	1.75	H2E15-683E
.082	.40	.55	.82	H2E4-823E	.40	.55	1.04	H2E6-823E	.57	.73	1.75	H2E10-823E	.70	1.13	1.75	H2E15-823E
.10	.40	.55	.82	H2E4-104E	.40	.55	1.04	H2E6-104E	.57	.73	1.75	H2E10-104E	.70	1.13	1.75	H2E15-104E
.12	.40	.55	.82	H2E4-124E	.40	.55	1.24	H2E6-124E	.57	.73	1.75	H2E10-124E	.80	1.13	1.75	H2E15-124E
.15	.40	.55	1.04	H2E4-154E	.57	.73	1.24	H2E6-154E	.57	.73	1.75	H2E10-154E	.80	1.13	1.75	H2E15-154E
.18	.40	.55	1.04	H2E4-184E	.57	.73	1.24	H2E6-184E	.70	1.13	1.75	H2E10-184E	1.27	1.40	1.77	H2E15-184E
.22	.40	.55	1.24	H2E4-224E	.57	.73	1.24	H2E6-224E	.70	1.13	1.75	H2E10-224E	1.27	1.40	1.77	H2E15-224E
.25	.57	.73	1.24	H2E4-254E	.57	.73	1.24	H2E6-254E	.70	1.13	1.75	H2E10-254E	1.27	1.40	1.77	H2E15-254E
.27	.57	.73	1.24	H2E4-274E	.57	.73	1.24	H2E6-274E	.70	1.13	1.75	H2E10-274E	1.27	1.40	1.77	H2E15-274E
.33	.57	.73	1.24	H2E4-334E	.57	.73	1.75	H2E6-334E	.80	1.13	1.75	H2E10-334E				
.39	.57	.73	1.24	H2E4-394E	.57	.73	1.75	H2E6-394E	1.27	1.40	1.77	H2E10-394E				
.47	.57	.73	1.24	H2E4-474E	.70	1.13	1.75	H2E6-474E	1.27	1.40	1.77	H2E10-474E				
.50	.57	.73	1.75	H2E4-504E	.70	1.13	1.75	H2E6-504E	1.27	1.40	1.77	H2E10-504E				
.56	.57	.73	1.75	H2E4-564E	.70	1.13	1.75	H2E6-564E	1.27	1.40	1.77	H2E10-564E				
.68	.57	.73	1.75	H2E4-684E	.70	1.13	1.75	H2E6-684E	1.27	1.40	1.77	H2E10-684E				
.75	.57	.73	1.75	H2E4-754E	.70	1.13	1.75	H2E6-754E	1.27	1.40	1.77	H2E10-754E				
.82	.70	1.13	1.75	H2E4-824E	.70	1.13	1.75	H2E6-824E								
1.0	.70	1.13	1.75	H2E4-105E	.80	1.13	1.75	H2E6-105E								
1.2	.70	1.13	1.75	H2E4-125E	1.27	1.40	1.77	H2E6-125E								
1.5	.80	1.13	1.75	H2E4-155E	1.27	1.40	1.77	H2E6-155E								
1.8	.80	1.13	1.75	H2E4-185E	1.27	1.40	1.77	H2E6-185E								
2.0	1.27	1.40	1.77	H2E4-205E	1.27	1.40	1.77	H2E6-205E								
3.0	1.27	1.40	1.77	H2E4-305E												
4.0	1.27	1.40	1.77	H2E4-405E												

TOLERANCE TABLE

Code Tolerance

A = ± 1% ♦

B = ± 2% ♦

C = ± 3% ♦

D = ± 5%

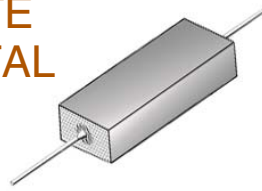
E = ± 10%

None = ± 20%

♦ = Temperature Stabilized

Note: Replace the last digit E with the desired tolerance code from the tolerance table. For an in-between value use the next larger value's dimensions. Custom sizes are readily available. All dimensions are in inches.

METALLIZED POLYCARBONATE HERMETICALLY SEALED, METAL CASED, RECTANGULAR CAPACITORS



HG
METALLIZED POLYCARBONATE
HERMETIC SEAL, RECTANG.
REGULAR SERIES

ORDERING DESCRIPTION

Capacitor, fixed: Metallized Polycarbonate dielectric; extended foil construction; tin-plated copper-clad steel wire axial leads; encased in a hermetically sealed rectangular tin plated brass tube with soldered glass to metal end seals.

APPLICATION NOTES

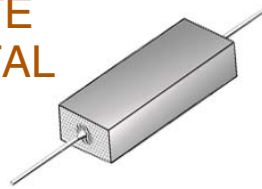
Metal encased capacitors are hermetically sealed and meet the moisture resistance, temperature and immersion cycling requirements of MIL-C-18312.

SELECTION AND ORDERING TABLES Select voltage rating, capacitance and tolerance, read Part Number to the right.

MFD	35VDC 20VAC				50VDC 40VAC				100VDC 70VAC				200VDC 120VAC			
	T	W	L	PART #	T	W	L	PART #	T	W	L	PART #	T	W	L	PART #
RATING	+ .015" - .005"	+ .015" - .005"	± .031"		+ .015" - .005"	+ .015" - .005"	± .031"		+ .015" - .005"	+ .015" - .005"	± .031"		+ .015" - .005"	+ .015" - .005"	± .031"	
.001	.22	.34	.563	HG.35-102E	.22	.34	.563	HG.5-102E	.22	.34	.563	HG1-102E	.22	.34	.563	HG2-102E
.0015	.22	.34	.563	HG.35-152E	.22	.34	.563	HG.5-152E	.22	.34	.563	HG1-152E	.22	.34	.563	HG2-152E
.0022	.22	.34	.563	HG.35-222E	.22	.34	.563	HG.5-222E	.22	.34	.563	HG1-222E	.22	.34	.563	HG2-222E
.0027	.22	.34	.563	HG.35-272E	.22	.34	.563	HG.5-272E	.22	.34	.563	HG1-272E	.22	.34	.563	HG2-272E
.0033	.22	.34	.563	HG.35-332E	.22	.34	.563	HG.5-332E	.22	.34	.563	HG1-332E	.22	.34	.563	HG2-332E
.0047	.22	.34	.563	HG.35-472E	.22	.34	.563	HG.5-472E	.22	.34	.563	HG1-472E	.22	.34	.563	HG2-472E
.0056	.22	.34	.563	HG.35-562E	.22	.34	.563	HG.5-562E	.22	.34	.563	HG1-562E	.22	.34	.563	HG2-562E
.0068	.22	.34	.563	HG.35-682E	.22	.34	.563	HG.5-682E	.22	.34	.563	HG1-682E	.22	.34	.563	HG2-682E
.0082	.22	.34	.563	HG.35-822E	.22	.34	.563	HG.5-822E	.22	.34	.563	HG1-822E	.22	.34	.563	HG2-822E
.01	.22	.34	.563	HG.35-103E	.22	.34	.563	HG.5-103E	.22	.34	.563	HG1-103E	.22	.34	.563	HG2-103E
.012	.22	.34	.563	HG.35-123E	.22	.34	.563	HG.5-123E	.22	.34	.563	HG1-123E	.22	.34	.563	HG2-123E
.015	.22	.34	.563	HG.35-153E	.22	.34	.563	HG.5-153E	.22	.34	.563	HG1-153E	.22	.34	.563	HG2-153E
.018	.22	.34	.563	HG.35-183E	.22	.34	.563	HG.5-183E	.22	.34	.563	HG1-183E	.22	.34	.688	HG2-183E
.022	.22	.34	.563	HG.35-223E	.22	.34	.563	HG.5-223E	.22	.34	.563	HG1-223E	.22	.34	.688	HG2-223E
.027	.22	.34	.563	HG.35-273E	.22	.34	.563	HG.5-273E	.22	.34	.563	HG1-273E	.22	.34	.688	HG2-273E
.033	.22	.34	.563	HG.35-333E	.22	.34	.563	HG.5-333E	.22	.34	.563	HG1-333E	.22	.34	.688	HG2-333E
.039	.22	.34	.563	HG.35-393E	.22	.34	.563	HG.5-393E	.22	.34	.563	HG1-393E	.22	.34	.688	HG2-393E
.047	.22	.34	.563	HG.35-473E	.22	.34	.563	HG.5-473E	.22	.34	.563	HG1-473E	.22	.34	.688	HG2-473E
.056	.22	.34	.563	HG.35-563E	.22	.34	.563	HG.5-563E	.22	.34	.563	HG1-563E	.22	.34	.688	HG2-563E
.068	.22	.34	.563	HG.35-683E	.22	.34	.563	HG.5-683E	.22	.34	.563	HG1-683E	.22	.34	.813	HG2-683E
.082	.22	.34	.563	HG.35-823E	.22	.34	.563	HG.5-823E	.22	.34	.688	HG1-823E	.22	.34	.813	HG2-823E
.10	.22	.34	.563	HG.35-104E	.22	.34	.563	HG.5-104E	.22	.34	.688	HG1-104E	.22	.34	.938	HG2-104E
.12	.22	.34	.563	HG.35-124E	.22	.34	.563	HG.5-124E	.22	.34	.688	HG1-124E	.22	.34	.938	HG2-124E
.15	.22	.34	.563	HG.35-154E	.22	.34	.625	HG.5-154E	.22	.34	.813	HG1-154E	.22	.34	1.125	HG2-154E
.18	.22	.34	.563	HG.35-184E	.22	.34	.625	HG.5-184E	.22	.34	.813	HG1-184E	.22	.34	1.125	HG2-184E
.22	.22	.34	.563	HG.35-224E	.22	.34	.625	HG.5-224E	.22	.34	.938	HG1-224E	.31	.41	.938	HG2-224E
.25	.22	.34	.563	HG.35-254E	.22	.34	.625	HG.5-254E	.22	.34	.938	HG1-254E	.31	.41	.938	HG2-254E
.27	.22	.34	.563	HG.35-274E	.22	.34	.625	HG.5-274E	.22	.34	.938	HG1-274E	.31	.41	.938	HG2-274E
.33	.22	.34	.563	HG.35-334E	.22	.34	.625	HG.5-334E	.22	.34	1.125	HG1-334E	.31	.41	1.125	HG2-334E
.39	.22	.34	.563	HG.35-394E	.22	.34	.625	HG.5-394E	.22	.34	1.125	HG1-394E	.31	.41	1.125	HG2-394E
.47	.22	.34	.563	HG.35-474E	.31	.41	.625	HG.5-474E	.31	.41	.938	HG1-474E	.40	.57	1.125	HG2-474E
.50	.22	.34	.688	HG.35-504E	.31	.41	.625	HG.5-504E	.31	.41	.938	HG1-504E	.40	.57	1.125	HG2-504E
.56	.22	.34	.688	HG.35-564E	.31	.41	.625	HG.5-564E	.31	.41	1.125	HG1-564E	.40	.57	1.125	HG2-564E
.68	.22	.34	.688	HG.35-684E	.31	.41	.625	HG.5-684E	.31	.41	1.125	HG1-684E	.40	.57	1.125	HG2-684E
.75	.22	.34	.688	HG.35-754E	.31	.41	.625	HG.5-754E	.31	.41	1.125	HG1-754E	.40	.57	1.125	HG2-754E
.82	.22	.34	.688	HG.35-824E	.31	.41	.781	HG.5-824E	.31	.41	1.313	HG1-824E	.40	.57	1.313	HG2-824E
1.0	.22	.34	.688	HG.35-105E	.31	.41	.781	HG.5-105E	.31	.41	1.313	HG1-105E	.40	.57	1.563	HG2-105E
1.2	.22	.34	.688	HG.35-125E	.31	.41	.906	HG.5-125E	.40	.57	1.125	HG1-125E	.40	.57	1.813	HG2-125E
1.5	.31	.41	.688	HG.35-155E	.31	.41	.906	HG.5-155E	.40	.57	1.125	HG1-155E	.40	.57	1.813	HG2-155E
1.8	.31	.41	.688	HG.35-185E	.40	.57	1.063	HG.5-185E	.40	.57	1.313	HG1-185E	.50	.65	1.563	HG2-185E
2.0	.31	.41	.688	HG.35-205E	.40	.57	1.063	HG.5-205E	.40	.57	1.313	HG1-205E	.50	.65	1.563	HG2-205E
3.0	.31	.41	.813	HG.35-305E	.40	.57	1.063	HG.5-305E	.40	.57	1.813	HG1-305E	.50	.65	2.313	HG2-305E
4.0	.31	.41	.938	HG.35-405E	.50	.65	1.313	HG.5-405E	.50	.65	2.063	HG1-405E	.60	.80	2.313	HG2-405E
5.0	.40	.57	.938	HG.35-505E	.50	.65	1.313	HG.5-505E	.50	.65	2.063	HG1-505E	.60	.80	2.313	HG2-505E
6.0	.40	.57	.938	HG.35-605E	.50	.65	1.313	HG.5-605E	.60	.80	2.063	HG1-605E	.60	.80	2.063	HG2-605E
8.0	.40	.57	1.125	HG.35-805E	.50	.65	1.313	HG.5-805E	.60	.80	2.063	HG1-805E	.60	.80	2.063	HG2-805E
10.0	.40	.57	1.125	HG.35-106E	.60	.80	1.313	HG.5-106E	.60	.80	2.313	HG1-106E	.60	.80	2.313	HG2-106E
12.0	.40	.57	1.313	HG.35-126E	.60	.80	1.313	HG.5-126E	.60	.80	2.313	HG1-126E	.60	.80	2.313	HG2-126E
15.0	.40	.57	1.313	HG.35-156E	.60	.80	1.781	HG.5-156E	.60	.80	2.313	HG1-156E	.60	.80	2.313	HG2-156E
18.0	.50	.65	1.313	HG.35-186E	.60	.80	1.813	HG.5-186E	.60	.80	1.813	HG1-186E	.60	.80	1.813	HG2-186E
20.0	.50	.65	1.313	HG.35-206E	.60	.80	1.813	HG.5-206E	.60	.80	1.813	HG1-206E	.60	.80	1.813	HG2-206E
30.0	.60	.80	1.313	HG.35-306E	.60	.80	1.813	HG.5-306E	.60	.80	1.813	HG1-306E	.60	.80	1.813	HG2-306E

Note: Replace the last digit **E** with the desired tolerance code from the tolerance table. For an in-between value use the next larger value's dimensions. Custom sizes are readily available. All dimensions are in inches.

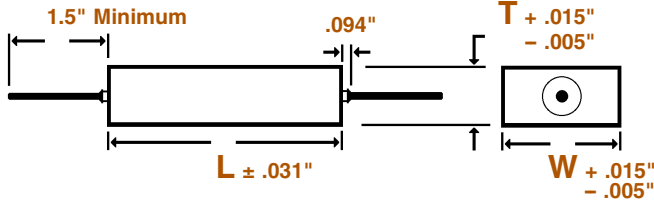
METALLIZED POLYCARBONATE HERMETICALLY SEALED, METAL CASED, RECTANGULAR CAPACITORS



HG
METALLIZED POLYCARBONATE
HERMETIC SEAL, RECTANG.
REGULAR SERIES

DIMENSIONS See tables for specific T, W, L values.

WIRE SIZE (Length 1.5" Minimum)



BODY SIZE (T) x (W)	WIRE SIZE	
	AWG No.	Diameter
.22" x .34"	24	0.020"
.31" x .41"	22	0.025"
.40" x .57" & Larger	20	0.032"

SELECTION AND ORDERING TABLES Select voltage rating, capacitance and tolerance, read Part Number to the right.

MFD	400VDC 230VAC				600VDC 275VAC				1000VDC 480VAC				
	RATING	T	W	L	PART #	T	W	L	PART #	T	W	L	PART #
		+ .015" - .005"	+ .015" - .005"	± .031"		+ .015" - .005"	+ .015" - .005"	± .031"		+ .015" - .005"	+ .015" - .005"	± .031"	
.001	.22	.34	.563	HG4-102E	.22	.34	.563	HG6-102E	.22	.34	1.125	HG10-102E	
.0012	.22	.34	.563	HG4-122E	.22	.34	.563	HG6-122E	.22	.34	1.125	HG10-122E	
.0015	.22	.34	.563	HG4-152E	.22	.34	.563	HG6-152E	.22	.34	1.125	HG10-152E	
.0018	.22	.34	.563	HG4-182E	.22	.34	.563	HG6-182E	.22	.34	1.125	HG10-182E	
.0022	.22	.34	.563	HG4-222E	.22	.34	.563	HG6-222E	.22	.34	1.125	HG10-222E	
.0027	.22	.34	.563	HG4-272E	.22	.34	.563	HG6-272E	.22	.34	1.125	HG10-272E	
.0033	.22	.34	.563	HG4-332E	.22	.34	.563	HG6-332E	.22	.34	1.125	HG10-332E	
.0039	.22	.34	.563	HG4-392E	.22	.34	.688	HG6-392E	.22	.34	1.125	HG10-392E	
.0047	.22	.34	.563	HG4-472E	.22	.34	.688	HG6-472E	.22	.34	1.125	HG10-472E	
.0056	.22	.34	.688	HG4-562E	.22	.34	.688	HG6-562E	.22	.34	1.125	HG10-562E	
.0068	.22	.34	.688	HG4-682E	.22	.34	.688	HG6-682E	.22	.34	1.125	HG10-682E	
.0082	.22	.34	.688	HG4-822E	.22	.34	.688	HG6-822E	.31	.41	1.125	HG10-822E	
.01	.22	.34	.688	HG4-103E	.22	.34	.688	HG6-103E	.31	.41	1.125	HG10-103E	
.012	.22	.34	.688	HG4-123E	.22	.34	.813	HG6-123E	.31	.41	1.125	HG10-123E	
.015	.22	.34	.688	HG4-153E	.22	.34	.813	HG6-153E	.31	.41	1.125	HG10-153E	
.018	.22	.34	.688	HG4-183E	.22	.34	.688	HG6-183E	.31	.41	1.125	HG10-183E	
.022	.22	.34	.813	HG4-223E	.22	.34	.938	HG6-223E	.40	.57	1.125	HG10-223E	
.027	.22	.34	.938	HG4-273E	.22	.34	1.125	HG6-273E	.50	.65	1.125	HG10-273E	
.033	.22	.34	.938	HG4-333E	.31	.41	.938	HG6-333E	.50	.65	1.125	HG10-333E	
.039	.22	.34	1.125	HG4-393E	.31	.41	.938	HG6-393E	.50	.65	1.125	HG10-393E	
.047	.22	.34	1.125	HG4-473E	.31	.41	1.125	HG6-473E	.40	.57	1.500	HG10-473E	
.056	.31	.41	.938	HG4-563E	.31	.41	1.125	HG6-563E	.50	.65	1.500	HG10-563E	
.068	.31	.41	1.125	HG4-683E	.31	.41	1.313	HG6-683E	.50	.65	1.500	HG10-683E	
.082	.31	.41	1.125	HG4-823E	.40	.57	1.125	HG6-823E	.50	.65	1.500	HG10-823E	
.10	.31	.41	1.313	HG4-104E	.40	.57	1.125	HG6-104E	.50	.65	1.813	HG10-104E	
.12	.31	.41	1.313	HG4-124E	.40	.57	1.125	HG6-124E	.50	.65	1.813	HG10-124E	
.15	.40	.57	1.125	HG4-154E	.40	.57	1.313	HG6-154E	.60	.80	1.813	HG10-154E	
.18	.40	.57	1.125	HG4-184E	.40	.57	1.563	HG6-184E	.60	.80	1.813	HG10-184E	
.22	.40	.57	1.313	HG4-224E	.40	.57	1.813	HG6-224E	.60	.80	2.625	HG10-224E	
.25	.40	.57	1.313	HG4-254E	.40	.57	1.813	HG6-254E	.60	.80	2.625	HG10-254E	
.27	.40	.57	1.563	HG4-274E	.50	.65	1.563	HG6-274E	.60	.80	2.625	HG10-274E	
.33	.40	.57	1.563	HG4-334E	.50	.65	1.813	HG6-334E	.60	.80	2.625	HG10-334E	
.39	.40	.57	1.813	HG4-394E	.50	.65	2.063	HG6-394E	.60	.80	3.375	HG10-394E	
.47	.50	.65	1.563	HG4-474E	.50	.65	2.313	HG6-474E	.60	.80	3.375	HG10-474E	
.50	.50	.65	1.813	HG4-504E	.50	.65	2.313	HG6-504E	.60	.80	3.375	HG10-504E	
.56	.50	.65	1.813	HG4-564E	.60	.80	2.063	HG6-564E					
.68	.50	.65	2.063	HG4-684E	.60	.80	2.063	HG6-684E					
.75	.50	.65	2.313	HG4-754E	.60	.80	2.313	HG6-754E					
.82	.60	.80	2.063	HG4-824E									
1.0	.60	.80	2.063	HG4-105E									

TOLERANCE TABLE

Code	Tolerance
A	± 1% ♦
B	± 2% ♦
C	± 3% ♦
D	± 5%
E	± 10%
None	± 20%
♦	Temperature Stabilized

HARDWARE

For use with metal tubes. Add the Code number to the end of the Part Number, include the dash ("-").

CODE DESCRIPTION

- 1 = Tangential Bracket
- 2 = Threaded Neck Term.
- 3 = Flat Lug Terminal
- 4 = 90° Lug Terminal
- 5 = Insulating Sleeve
- 6 = Stud Mounting

Add .015" to the capacitors dimensions for the Insulating Sleeve.

Codes may be combined. Example:
- 35 = Flat Lug Terminal with Insulating Sleeve. (Place lower number first)

Note: Replace the last digit **E** with the desired tolerance code from the tolerance table. For an in-between value use the next larger value's dimensions. Custom sizes are readily available. All dimensions are in inches.

METALLIZED POLYCARBONATE HERMETICALLY SEALED, ROUND, METAL CASED CAPACITORS



HL
METALLIZED POLYCARBONATE
HERMETIC SEAL, ROUND
REGULAR SERIES

ORDERING DESCRIPTION

Capacitor, fixed: Metallized Polycarbonate dielectric; extended foil construction; tin-plated copper-clad steel wire axial leads; encased in a hermetically sealed round tin plated brass tube with soldered glass to metal end seals.

APPLICATION NOTES

Metal encased capacitors are hermetically sealed and meet the moisture resistance, temperature and immersion cycling requirements of MIL-C-18312.

SELECTION AND ORDERING TABLES Select voltage rating, capacitance and tolerance, read Part Number to the right.

MFD	35VDC 20VAC			50VDC 40VAC			100VDC 70VAC			200VDC 120VAC		
	RATING	D	L	PART #	D	L	PART #	D	L	PART #	D	L
	+ .015" - .005"	± .031"		+ .015" - .005"	± .031"		+ .015" - .005"	± .031"		+ .015" - .005"	± .031"	
.001	.195	.531	HL.35-102E	.235	.531	HL.5-102E	.235	.531	HL1-102E	.235	.531	HL2-102E
.0027	.195	.531	HL.35-272E	.235	.531	HL.5-272E	.235	.531	HL1-272E	.235	.531	HL2-272E
.0033	.195	.531	HL.35-332E	.235	.531	HL.5-332E	.235	.531	HL1-332E	.235	.531	HL2-332E
.0056	.195	.531	HL.35-562E	.235	.531	HL.5-562E	.235	.531	HL1-562E	.235	.531	HL2-562E
.0068	.195	.531	HL.35-682E	.235	.531	HL.5-682E	.235	.531	HL1-682E	.235	.531	HL2-682E
.0082	.195	.531	HL.35-822E	.235	.531	HL.5-822E	.235	.531	HL1-822E	.235	.531	HL2-822E
.01	.195	.531	HL.35-103E	.235	.531	HL.5-103E	.175	.625	HL1-103E	.175	.625	HL2-103E
.012	.195	.531	HL.35-123E	.235	.531	HL.5-123E	.175	.625	HL1-123E	.175	.625	HL2-123E
.015	.195	.531	HL.35-153E	.235	.531	HL.5-153E	.175	.625	HL1-153E	.195	.625	HL2-153E
.018	.195	.531	HL.35-183E	.235	.531	HL.5-183E	.175	.625	HL1-183E	.195	.625	HL2-183E
.022	.195	.531	HL.35-223E	.235	.531	HL.5-223E	.175	.625	HL1-223E	.235	.625	HL2-223E
.027	.195	.531	HL.35-273E	.235	.531	HL.5-273E	.175	.625	HL1-273E	.235	.625	HL2-273E
.033	.195	.531	HL.35-333E	.235	.531	HL.5-333E	.195	.625	HL1-333E	.235	.813	HL2-333E
.039	.195	.531	HL.35-393E	.235	.531	HL.5-393E	.195	.625	HL1-393E	.235	.813	HL2-393E
.047	.195	.531	HL.35-473E	.235	.531	HL.5-473E	.235	.625	HL1-473E	.235	.813	HL2-473E
.056	.195	.531	HL.35-563E	.235	.531	HL.5-563E	.235	.625	HL1-563E	.312	.813	HL2-563E
.068	.195	.531	HL.35-683E	.235	.531	HL.5-683E	.235	.625	HL1-683E	.312	.813	HL2-683E
.082	.195	.531	HL.35-823E	.235	.531	HL.5-823E	.235	.813	HL1-823E	.312	.813	HL2-823E
.10	.195	.531	HL.35-104E	.235	.531	HL.5-104E	.235	.813	HL1-104E	.312	.813	HL2-104E
.12	.195	.531	HL.35-124E	.235	.531	HL.5-124E	.312	.813	HL1-124E	.312	.938	HL2-124E
.15	.235	.531	HL.35-154E	.235	.625	HL.5-154E	.312	.813	HL1-154E	.312	.938	HL2-154E
.18	.235	.531	HL.35-184E	.235	.625	HL.5-184E	.312	.813	HL1-184E	.312	1.125	HL2-184E
.22	.235	.531	HL.35-224E	.235	.625	HL.5-224E	.312	.813	HL1-224E	.312	1.125	HL2-224E
.25	.235	.531	HL.35-254E	.235	.625	HL.5-254E	.312	.938	HL1-254E	.400	.938	HL2-254E
.27	.312	.531	HL.35-274E	.235	.625	HL.5-274E	.312	.938	HL1-274E	.400	.938	HL2-274E
.33	.312	.531	HL.35-334E	.312	.625	HL.5-334E	.312	.938	HL1-334E	.400	1.125	HL2-334E
.39	.312	.531	HL.35-394E	.312	.625	HL.5-394E	.312	1.125	HL1-394E	.400	1.125	HL2-394E
.47	.312	.531	HL.35-474E	.312	.625	HL.5-474E	.312	1.125	HL1-474E	.400	1.313	HL2-474E
.50	.312	.625	HL.35-504E	.312	.625	HL.5-504E	.400	.938	HL1-504E	.500	1.125	HL2-504E
.56	.312	.625	HL.35-564E	.312	.625	HL.5-564E	.400	1.125	HL1-564E	.500	1.125	HL2-564E
.68	.312	.625	HL.35-684E	.312	.781	HL.5-684E	.400	1.125	HL1-684E	.500	1.125	HL2-684E
.75	.312	.625	HL.35-754E	.312	.781	HL.5-754E	.400	1.125	HL1-754E	.500	1.313	HL2-754E
.82	.312	.625	HL.35-824E	.312	.781	HL.5-824E	.400	1.313	HL1-824E	.500	1.313	HL2-824E
1.0	.312	.625	HL.35-105E	.400	.781	HL.5-105E	.400	1.313	HL1-105E	.562	1.313	HL2-105E
1.2	.312	.625	HL.35-125E	.400	.781	HL.5-125E	.500	1.313	HL1-125E	.562	1.813	HL2-125E
1.5	.400	.625	HL.35-155E	.400	.781	HL.5-155E	.500	1.313	HL1-155E	.562	1.813	HL2-155E
1.8	.400	.625	HL.35-185E	.400	.906	HL.5-185E	.562	1.313	HL1-185E	.670	1.813	HL2-185E
2.0	.400	.625	HL.35-205E	.400	.906	HL.5-205E	.562	1.313	HL1-205E	.670	1.813	HL2-205E
3.0	.400	.813	HL.35-305E	.500	.906	HL.5-305E	.562	1.813	HL1-305E	.670	1.813	HL2-305E
4.0	.400	.938	HL.35-405E	.562	1.063	HL.5-405E	.670	1.813	HL1-405E	1.000	1.813	HL2-405E
5.0	.400	.938	HL.35-505E	.562	1.063	HL.5-505E	.670	1.813	HL1-505E	1.000	1.813	HL2-505E
6.0	.500	.938	HL.35-605E	.562	1.313	HL.5-605E	.750	2.063	HL1-605E	1.000	2.063	HL2-605E
8.0	.500	1.125	HL.35-805E	.562	1.313	HL.5-805E	.750	2.063	HL1-805E	1.000	2.063	HL2-805E
10.0	.500	1.125	HL.35-106E	.670	1.313	HL.5-106E	1.000	1.813	HL1-106E	1.000	2.313	HL2-106E
12.0	.500	1.313	HL.35-126E	.670	1.313	HL.5-126E	1.000	1.813	HL1-126E	1.000	2.313	HL2-126E
15.0	.562	1.313	HL.35-156E	.750	1.313	HL.5-156E	1.000	2.063	HL1-156E	1.000	3.313	HL2-156E
20.0	.562	1.313	HL.35-206E	.670	1.813	HL.5-206E	1.000	2.313	HL1-206E			
30.0	.670	1.313	HL.35-306E	.750	1.813	HL.5-306E	1.000	2.313	HL1-306E			
40.0	.750	1.313	HL.35-406E	1.000	1.813	HL.5-406E						
50.0	1.000	1.313	HL.35-506E	1.000	1.813	HL.5-506E						
75.0	1.000	1.625	HL.35-756E	1.000	1.813	HL.5-756E						
100.0	1.000	1.625	HL.35-107E									

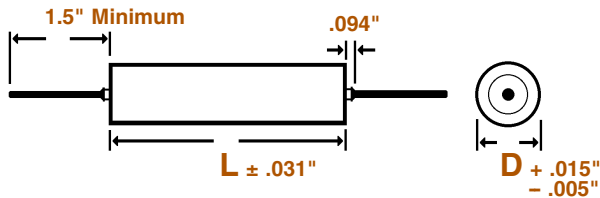
Note: Replace the last digit **E** with the desired tolerance code from the tolerance table. For an in-between value use the next larger value's dimensions. Custom sizes are readily available. All dimensions are in inches.

METALLIZED POLYCARBONATE HERMETICALLY SEALED, ROUND, METAL CASED CAPACITORS



HL
METALLIZED POLYCARBONATE
HERMETIC SEAL, ROUND
REGULAR SERIES

DIMENSIONS See tables for specific **D**, **L** values.



WIRE SIZE (Length 1.5" Minimum)

BODY DIAMETER (D)	WIRE SIZE	
	AWG No.	Diameter
.175" & .195"	24	0.020"
.235" & .312"	22	0.025"
.400" & Larger	20	0.032"

SELECTION AND ORDERING TABLES Select voltage rating, capacitance and tolerance, read Part Number to the right.

MFD	400VDC 230VAC			600VDC 275VAC			1000VDC 480VAC			
	RATING	D	L	PART #	D	L	PART #	D	L	PART #
		+ .015" - .005"	± .031"		+ .015" - .005"	± .031"		+ .015" - .005"	± .031"	
.001	.235	.531	HL4-102E	.235	.531	HL6-102E	.312	1.125	HL10-102E	
.0012	.235	.531	HL4-122E	.235	.531	HL6-122E	.312	1.125	HL10-122E	
.0015	.235	.531	HL4-152E	.235	.531	HL6-152E	.312	1.125	HL10-152E	
.0018	.235	.531	HL4-182E	.235	.531	HL6-182E	.312	1.125	HL10-182E	
.0022	.235	.531	HL4-222E	.235	.531	HL6-222E	.312	1.125	HL10-222E	
.0027	.235	.531	HL4-272E	.235	.531	HL6-272E	.312	1.125	HL10-272E	
.0033	.235	.531	HL4-332E	.235	.531	HL6-332E	.312	1.125	HL10-332E	
.0039	.235	.531	HL4-392E	.312	.625	HL6-392E	.312	1.125	HL10-392E	
.0047	.235	.531	HL4-472E	.312	.625	HL6-472E	.312	1.125	HL10-472E	
.0056	.235	.625	HL4-562E	.312	.625	HL6-562E	.312	1.125	HL10-562E	
.0068	.235	.625	HL4-682E	.312	.625	HL6-682E	.312	1.125	HL10-682E	
.0082	.235	.625	HL4-822E	.312	.625	HL6-822E	.312	1.125	HL10-822E	
.01	.235	.813	HL4-103E	.312	.813	HL6-103E	.400	1.125	HL10-103E	
.012	.235	.813	HL4-123E	.312	.813	HL6-123E	.400	1.125	HL10-123E	
.015	.312	.813	HL4-153E	.312	.813	HL6-153E	.400	1.125	HL10-153E	
.018	.312	.813	HL4-183E	.312	.813	HL6-183E	.500	1.125	HL10-183E	
.022	.312	.813	HL4-223E	.312	.938	HL6-223E	.500	1.125	HL10-223E	
.027	.312	.813	HL4-273E	.312	1.125	HL6-273E	.500	1.125	HL10-273E	
.033	.312	.938	HL4-333E	.312	1.125	HL6-333E	.562	1.125	HL10-333E	
.039	.312	.938	HL4-393E	.400	.938	HL6-393E	.562	1.125	HL10-393E	
.047	.312	1.125	HL4-473E	.400	.938	HL6-473E	.670	1.125	HL10-473E	
.056	.400	.938	HL4-563E	.400	1.125	HL6-563E	.562	1.500	HL10-563E	
.068	.400	.938	HL4-683E	.400	1.125	HL6-683E	.562	1.500	HL10-683E	
.082	.400	1.125	HL4-823E	.500	1.125	HL6-823E	.670	1.500	HL10-823E	
.10	.400	1.125	HL4-104E	.500	1.125	HL6-104E	.670	1.500	HL10-104E	
.12	.500	1.125	HL4-124E	.500	1.125	HL6-124E	.750	1.500	HL10-124E	
.15	.500	1.125	HL4-154E	.500	1.313	HL6-154E	1.000	1.500	HL10-154E	
.18	.500	1.125	HL4-184E	.562	1.313	HL6-184E	1.000	1.500	HL10-184E	
.22	.500	1.313	HL4-224E	.562	1.813	HL6-224E	1.000	1.875	HL10-224E	
.25	.562	1.313	HL4-254E	.562	1.813	HL6-254E	1.000	1.875	HL10-254E	
.27	.562	1.313	HL4-274E	.562	1.813	HL6-274E	1.000	1.875	HL10-274E	
.33	.562	1.813	HL4-334E	.670	1.813	HL6-334E	1.000	1.875	HL10-334E	
.39	.562	1.813	HL4-394E	.670	1.813	HL6-394E	1.000	1.875	HL10-394E	
.47	.562	1.813	HL4-474E	.750	1.813	HL6-474E	1.000	2.625	HL10-474E	
.50	.670	1.813	HL4-504E	.750	1.813	HL6-504E	1.000	2.625	HL10-504E	
.56	.670	1.813	HL4-564E	.750	1.813	HL6-564E	1.000	2.625	HL10-564E	
.68	.670	1.813	HL4-684E	.750	2.063	HL6-684E	1.000	2.625	HL10-684E	
.75	.750	2.063	HL4-754E	1.000	1.813	HL6-754E	1.000	2.625	HL10-754E	
.82	.750	2.063	HL4-824E	1.000	1.813	HL6-824E	1.000	3.375	HL10-824E	
1.0	.750	2.063	HL4-105E	1.000	1.813	HL6-105E	1.000	3.375	HL10-105E	
1.2	1.000	1.813	HL4-125E	1.000	2.313	HL6-125E				
1.5	1.000	1.813	HL4-155E	1.000	2.313	HL6-155E				
1.8	1.000	2.063	HL4-185E							
2.0	1.000	2.063	HL4-205E							

TOLERANCE TABLE

Code	Tolerance
A	± 1% ♦
B	± 2% ♦
C	± 3% ♦
D	± 5%
E	± 10%
None	± 20%
♦	Temperature Stabilized

HARDWARE

For use with metal tubes. Add the Code number to the end of the Part Number, include the dash ("-").

CODE DESCRIPTION

- 1 = Tangential Bracket
- 2 = Threaded Neck Term.
- 3 = Flat Lug Terminal
- 4 = 90° Lug Terminal
- 5 = Insulating Sleeve
- 6 = Stud Mounting

Add .015" to the capacitors dimensions for the Insulating Sleeve.

Codes may be combined. Example:
- 35 = Flat Lug Terminal with Insulating Sleeve. (Place lower number first)

Note: Replace the last digit **E** with the desired tolerance code from the tolerance table. For an in-between value use the next larger value's dimensions. Custom sizes are readily available. All dimensions are in inches.

METALLIZED POLYCARBONATE CAPACITORS PARAMETRIC TREND CURVES AND ACCEPTANCE CRITERIA

SERIES **H**

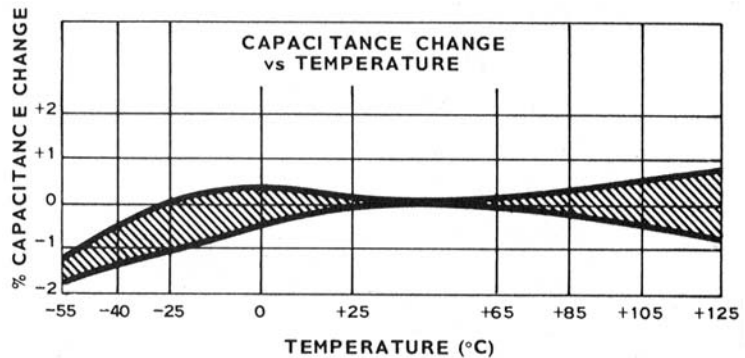
CAPACITANCE

Reference MIL-STD-202, Method 305
Test Frequency: 1000 Hz
Temperature: +25°C

Capacitance Change Over
Temperature.

Acceptance Limits:

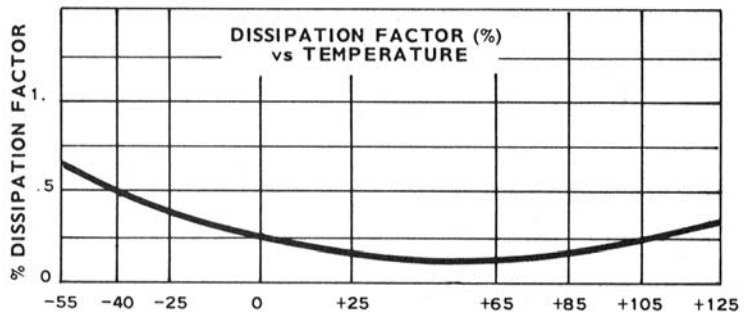
- @ -55°C = -2% Maximum Change
- @ +85°C = ±1% Maximum Change
- @ +125°C = ±2% Maximum Change



DISSIPATION FACTOR

Reference MIL-STD-202,
Method 306
Test Frequency: 1000 Hz
Temperature: +25°C

Acceptance Limit: 0.30% Maximum

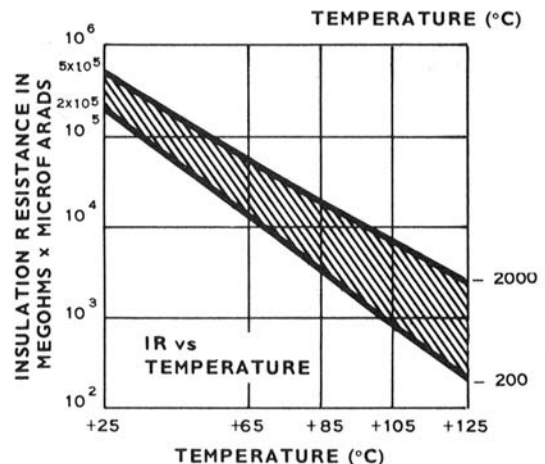


INSULATION RESISTANCE

Reference MIL-STD-202, Method 302
Electrification shall be at rated voltage
or 500 VDC, whichever is less and for
a time not greater than 2 minutes.

Acceptance Limits:

Test Temperature	Megs x μ f Minimum	Megohms Need not exceed
@ +25°C	100,000	200,000
@ +85°C	1,000	20,000
@ +125°C	100	2,000



VOLTAGE RATING

100% of listed voltage rating from -55°C to +125°C,

VOLTAGE TEST

Reference MIL-STD-202, Method 301. Surge current is limited to 1 ampere maximum. Voltage applied for 1 minute (maximum) @ +25°C. Ground test is performed terminal to case (where the case is not a terminal) at 200% of the DC voltage rating. Dielectric strength test is performed terminal to terminal at 200% of the DC voltage rating.