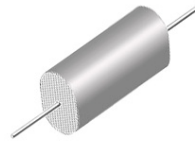
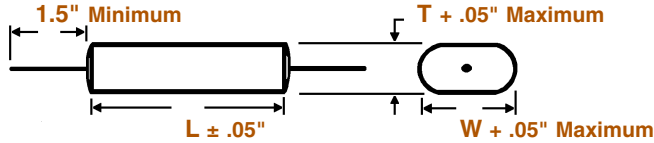


SUPERMETALLIZED POLYPROPYLENE WRAP AND FILL, OVAL AXIAL LEAD CAPACITORS



V
SUPERMETALLIZED POLYPROPYLENE
WRAP & FILL, OVAL
MINIATURE SERIES

DIMENSIONS See tables for specific T, W, L values.



WIRE SIZE (Length 1.5" Minimum) Tin plated solid copper leads.

BODY LENGTH (L)	WIRE SIZE	
	AWG No.	Diameter
≤ 0.98"	22	0.025"
> 0.98" ≤ 1.45"	20	0.032"
> 1.45"	18	0.040"

V SERIES SUPERMETALLIZED POLYPROPYLENE CAPACITORS FOR SWITCHING POWER SUPPLIES

LOW ESR • HIGH CURRENT • HIGH FREQUENCY

CONSTRUCTION:

Low loss SuperMetallized Polypropylene dielectric; extended foil, with high current end terminations. Type V Series are encased in a skin tight flame retardant* plastic wrap with epoxy end fill. *UL 510 Specification.

CAPACITANCE:

Measured at +25°C @ 1000Hz. MIL STD 202 Method 305

EQUIVALENT SERIES RESISTANCE:

Maximum ESR in milliohms @ 100KHz and +25°C.

RMS CURRENT:

Maximum RMS current in amps @ +25°C.

PEAK CURRENT:

Maximum Peak current in amps @ +25°C.

DV/DT:

Maximum allowed change in volts per microsecond.

OPERATING TEMPERATURE:

-55°C to +105°C without derating

SELECTION AND ORDERING TABLE

400VDC								
MFD RATING	T + .05"	W + .05"	L ± .05"	ESR MAX	RMS AMPS	PEAK AMPS	DV/DT MAX	PART NUMBER
.10	.17	.25	.67	85	1	70	700	V4-104E
.15	.22	.31	.67	54	1.5	105	700	V4-154E
.22	.28	.37	.67	42	2	154	700	V4-224E
.33	.35	.44	.67	27	3	231	700	V4-334E
.47	.23	.48	1.17	21	4	138	294	V4-474E
.68	.25	.54	1.17	13	6	200	294	V4-684E
1.0	.34	.60	1.17	11	9	294	294	V4-105E
1.2	.37	.63	1.17	10	9	353	294	V4-125E
1.5	.43	.70	1.17	9	10	441	294	V4-155E
2.0	.49	.79	1.17	8	11	588	294	V4-205E
2.2	.51	.84	1.17	8	11	647	294	V4-225E
3.0	.62	.90	1.17	7	15	882	294	V4-305E
3.3	.64	.94	1.17	7	15	970	294	V4-335E
4.0	.78	.99	1.17	7	16	1176	294	V4-405E
4.7	.59	.89	1.68	7	17	874	186	V4-475E
5.0	.62	.91	1.68	7	17	930	186	V4-505E
6.0	.70	.99	1.68	7	17	1116	186	V4-605E
6.8	.62	.91	2.17	7	17	925	136	V4-685E
8.0	.74	.98	2.17	6	18	1088	136	V4-805E
10.0	.83	1.09	2.17	6	19	1360	136	V4-106E
15.0	1.07	1.31	2.17	6	20	2040	136	V4-156E
20.0	1.24	1.48	2.17	6	20	2720	136	V4-206E
30.0	1.53	1.77	2.17	6	20	4080	136	V4-306E
40.0	1.78	1.99	2.17	6	20	5440	136	V4-406E

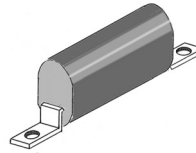
SELECTION AND ORDERING TABLES Select voltage rating, capacitance and tolerance, read Part Number to the right.

600VDC								
MFD RATING	T + .05"	W + .05"	L ± .05"	ESR MAX	RMS AMPS	PEAK AMPS	DV/DT MAX	PART NUMBER
.10	.28	.37	.78	75	1	93	936	V6-104E
.15	.35	.44	.78	40	1.5	140	936	V6-154E
.22	.44	.53	.78	25	2	206	936	V6-224E
.33	.55	.64	.78	20	3	309	936	V6-334E
.47	.41	.70	1.17	13	4	240	511	V6-474E
.68	.50	.80	1.17	10	6	347	511	V6-684E
1.0	.62	.92	1.17	8	9	511	511	V6-105E
1.2	.69	.98	1.17	7	10	613	511	V6-125E
1.5	.68	.98	1.45	7	11	477	318	V6-155E
2.0	.82	1.07	1.45	6	12	636	318	V6-205E
2.2	.59	.89	2.17	10	13	508	231	V6-225E
3.0	.76	1.02	2.17	10	14	693	231	V6-305E
3.3	.78	1.10	2.17	10	15	762	231	V6-335E
4.0	.91	1.18	2.17	9	16	924	231	V6-405E
4.7	.94	1.28	2.17	9	16	1085	231	V6-475E
5.0	.99	1.31	2.17	9	16	1155	231	V6-505E
6.0	1.14	1.39	2.17	9	16	1386	231	V6-605E
6.8	1.19	1.51	2.17	9	17	1571	231	V6-685E
8.0	1.24	1.68	2.17	8	18	1848	231	V6-805E
10.0	1.41	1.83	2.17	7	19	2310	231	V6-106E

1000VDC								
MFD RATING	T + .05"	W + .05"	L ± .05"	ESR MAX	RMS AMPS	PEAK AMPS	DV/DT MAX	PART NUMBER
.10	.48	.57	.78	85	1	149	1493	V10-104E
.15	.61	.69	.78	54	2	224	1493	V10-154E
.22	.53	.62	1.17	42	2	180	818	V10-224E
.33	.66	.75	1.17	27	3	270	818	V10-334E
.47	.80	.89	1.17	21	4	384	818	V10-474E
.68	.76	1.00	1.45	13	6	427	628	V10-684E
1.0	.96	1.20	1.45	11	9	628	628	V10-105E
1.2	1.06	1.31	1.45	10	9	754	628	V10-125E
1.5	.89	1.13	2.17	9	10	555	370	V10-155E
2.0	1.04	1.29	2.17	8	11	740	370	V10-205E
2.2	1.11	1.35	2.17	8	11	814	370	V10-225E
3.0	1.30	1.54	2.17	7	15	1110	370	V10-305E
3.3	1.36	1.60	2.17	7	15	1221	370	V10-335E
4.0	1.51	1.75	2.17	7	16	1480	370	V10-405E
4.7	1.64	1.88	2.17	7	16	1739	370	V10-475E
5.0	1.69	1.93	2.17	7	16	1850	370	V10-505E
6.0	1.64	1.88	2.67	7	17	1746	291	V10-605E
6.8	1.75	1.99	2.67	7	17	1978	291	V10-685E
8.0	1.90	2.14	2.67	6	18	2328	291	V10-805E
10.0	2.13	2.37	2.67	6	19	2910	291	V10-106E

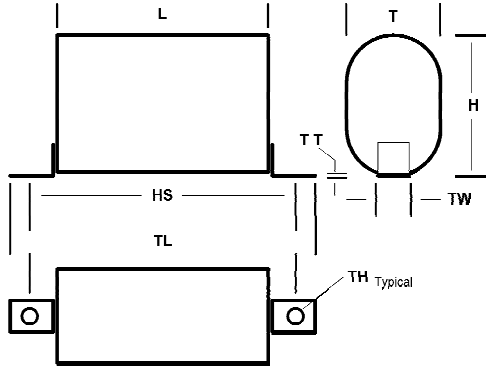
Note: Replace the last digit **E** with the desired tolerance code from the tolerance table. For an in-between value use the next larger value's dimensions. Custom sizes are readily available. All dimensions are in inches. All +.05" dimension tolerances are Maximum.

SUPERMETALLIZED POLYPROPYLENE WRAP AND FILL, OVAL SURFACE MOUNT TAB CAPACITORS



VT
SUPERMETALLIZED POLYPROPYLENE
WRAP & FILL, OVAL
MINIATURE SERIES

DIMENSIONS See tables for specific T, H, L, HS, TL, TW, TT, TH, values.



TAB MOUNTING DIMENSIONS					
L CAPACITOR BODY LENGTH	HS HOLE SPACING ± .02"	TL TOTAL LENGTH ± .05"	TW TAB WIDTH ± .05"	TT TAB THICKNESS ± .005"	TH TAB HOLE ± .010"
.88	1.48	1.88	.32	.028	.168
1.25	1.85	2.25	.32	.028	.168
1.50	2.10	2.50	.32	.028	.168
1.75	2.35	2.75	.32	.028	.168
2.25	2.85	3.25	.32	.028	.168
2.75	3.35	3.75	.32	.028	.168

V SERIES SUPERMETALLIZED POLYPROPYLENE CAPACITORS FOR SWITCHING POWER SUPPLIES LOW ESR • HIGH CURRENT • HIGH FREQUENCY

CONSTRUCTION:

Low loss SuperMetallized Polypropylene dielectric; extended foil, with high current end terminations. Type V Series are encased in a skin tight flame retardant* plastic wrap with epoxy end fill. *UL 510 Specification.

CAPACITANCE:

Measured at +25°C @ 1000Hz. MIL STD 202 Method 305

EQUIVALENT SERIES RESISTANCE:

Maximum ESR in milliohms @ 100KHz and +25°C.

RMS CURRENT:

Maximum RMS current in amps @ +25°C.

PEAK CURRENT:

Maximum Peak current in amps @ +25°C.

DV/DT:

Maximum allowed change in volts per microsecond.

OPERATING TEMPERATURE:

-55°C to +105°C without derating

SELECTION AND ORDERING TABLE

400vdc									
MFD RATING	T +.05"	H +.05"	L ± .05"	ESR MAX	RMS AMPS	PEAK AMPS	DV/DT MAX	PART NUMBER	
1.5	.43	.70	1.25	9	10	441	294	VT4-155E	
2.0	.49	.79	1.25	8	11	588	294	VT4-205E	
2.2	.51	.84	1.25	8	11	647	294	VT4-225E	
3.0	.62	.90	1.25	7	15	882	294	VT4-305E	
3.3	.64	.94	1.25	7	15	970	294	VT4-335E	
4.0	.78	.99	1.25	7	16	1176	294	VT4-405E	
4.7	.59	.89	1.75	7	17	874	186	VT4-475E	
5.0	.62	.91	1.75	7	17	930	186	VT4-505E	
6.0	.70	.99	1.75	7	17	1116	186	VT4-605E	
6.8	.62	.91	2.25	7	17	925	136	VT4-685E	
8.0	.74	.98	2.25	6	18	1088	136	VT4-805E	
10.0	.83	1.09	2.25	6	19	1360	136	VT4-106E	
15.0	1.07	1.31	2.25	6	20	2040	136	VT4-156E	
20.0	1.24	1.48	2.25	6	20	2720	136	VT4-206E	
30.0	1.53	1.77	2.25	6	20	4080	136	VT4-306E	
40.0	1.78	1.99	2.25	6	20	5440	136	VT4-406E	

SELECTION AND ORDERING TABLES Select voltage rating, capacitance and tolerance, read Part Number to the right.

600vdc									
MFD RATING	T +.05"	H +.05"	L ± .05"	ESR MAX	RMS AMPS	PEAE AMPS	DV/DT MAX	PART NUMBER	
.22	.44	.53	.88	25	2	206	936	VT6-224E	
.33	.55	.64	.88	20	3	309	936	VT6-334E	
.47	.41	.70	1.25	13	4	240	511	VT6-474E	
.68	.50	.80	1.25	10	6	347	511	VT6-684E	
1.0	.62	.92	1.25	8	9	511	511	VT6-105E	
1.2	.69	.98	1.25	7	10	613	511	VT6-125E	
1.5	.68	.98	1.50	7	11	477	318	VT6-155E	
2.0	.82	1.07	1.50	6	12	636	318	VT6-205E	
2.2	.59	.89	2.25	10	13	508	231	VT6-225E	
3.0	.76	1.02	2.25	10	14	693	231	VT6-305E	
3.3	.78	1.10	2.25	10	15	762	231	VT6-335E	
4.0	.91	1.18	2.25	9	16	924	231	VT6-405E	
4.7	.94	1.28	2.25	9	16	1085	231	VT6-475E	
5.0	.99	1.31	2.25	9	16	1155	231	VT6-505E	
6.0	1.14	1.39	2.25	9	16	1386	231	VT6-605E	
6.8	1.19	1.51	2.25	9	17	1571	231	VT6-685E	
8.0	1.24	1.68	2.25	8	18	1848	231	VT6-805E	
10.0	1.41	1.83	2.25	7	19	2310	231	VT6-106E	

1000vdc									
MFD RATING	T +.05"	H +.05"	L ± .05"	ESR MAX	RMS AMPS	PEAE AMPS	DV/DT MAX	PART NUMBER	
.10	.48	.57	.88	85	1	149	1493	VT10-104E	
.15	.61	.69	.88	54	2	224	1493	VT10-154E	
.22	.53	.62	1.25	42	2	180	818	VT10-224E	
.33	.66	.75	1.25	27	3	270	818	VT10-334E	
.47	.80	.89	1.25	21	4	384	818	VT10-474E	
.68	.76	1.00	1.50	13	6	427	628	VT10-684E	
1.0	.96	1.20	1.50	11	9	628	628	VT10-105E	
1.2	1.06	1.31	1.50	10	9	754	628	VT10-125E	
1.5	.89	1.13	2.25	9	10	555	370	VT10-155E	
2.0	1.04	1.29	2.25	8	11	740	370	VT10-205E	
2.2	1.11	1.35	2.25	8	11	814	370	VT10-225E	
3.0	1.30	1.54	2.25	7	15	1110	370	VT10-305E	
3.3	1.36	1.60	2.25	7	15	1221	370	VT10-335E	
4.0	1.51	1.75	2.25	7	16	1480	370	VT10-405E	
4.7	1.64	1.88	2.25	7	16	1739	370	VT10-475E	
5.0	1.69	1.93	2.25	7	16	1850	370	VT10-505E	
6.0	1.64	1.88	2.75	7	17	1746	291	VT10-605E	
6.8	1.75	1.99	2.75	7	17	1978	291	VT10-685E	
8.0	1.90	2.14	2.75	6	18	2328	291	VT10-805E	
10.0	2.13	2.37	2.75	6	19	2910	291	VT10-106E	

Note: Replace the last digit **E** with the desired tolerance code from the tolerance table. For an in-between value use the next larger value's dimensions. Custom sizes are readily available. All dimensions are in inches. All +.05" dimension tolerances are Maximum.